



Venice of America

CITY OF
FORT LAUDERDALE

AVIATION ADVISORY BOARD MEETING

Thursday, March 27, 2014 – 1:30 p.m.

Fort Lauderdale Executive Airport

6000 NW 21st Avenue

Fort Lauderdale, Florida 33309

**Aviation Advisory
Board**

Linda Iversen
Chair

Stephen O'Malley
Vice Chair

Ron Carlson

Jeffrey Fauer

Michael J. Grimmé

Patrick Kerney

Ed Kwoka

Tom Moody

Dana Pollitt

Mark Volchek

Commissioner
Pamela Bushnell
City of Tamarac

Jeff Helyer
City of Oakland Park

CALL TO ORDER

1. Roll Call
2. Service Award – Steve Stella

VOTING ITEMS

1. Approve Minutes of January 23, 2014 Meeting
2. RFQ #946-11345 – General Engineering Construction Management Services for U.S. Customs and Border Protection Facility
3. Memorandum of Agreement for Information Technology Services U.S. Customs and Border Protection Facility – Project 11242
4. Airfield Lighting Computer Monitoring System – Project 11909
5. Foreign-Trade Zone 241 – Operator Agreement with Marina Mile Yachting Center, Inc.
6. Foreign-Trade Zone 241 – Operator Agreement with DFC Services Corporation
7. Foreign-Trade Zone 241 – Resolution Authorizing City Manager to execute Operating Agreements with Operators
8. RFP #545-11371 – Foreign-Trade Zone Consultant Services
9. Bid #543-11355 – Earthwork Improvements – Parcels B, C, & D

UPDATE ITEMS

- A. Noise Compatibility Program
- B. Development and Construction
- C. Arrearages
- D. Communications to the City Commission
- E. FLL Update
- F. 2014 FXE Aviation Safety Expo

NEXT SCHEDULED MEETING DATE: Thursday, April 24, 2014 – 1:30 PM

Mark J. Cervasio
Acting Airport Manager

PURPOSE: To recommend to the City Commission action necessary for the planning, establishment, development, construction, enlargement, improvement, maintenance, operation, regulation and policing of airports owned, operated and controlled by the City.

NOTE: Two or more City of Fort Lauderdale commissioners or members of a Fort Lauderdale advisory board or committee may be in attendance at this meeting.

If a person decides to appeal any decision made with respect to any matter considered at this public meeting or hearing, he/she will need to ensure that a verbatim record of the proceedings is made, which record includes the testimony and evidence upon which the appeal is to be based.

If you desire auxiliary services to assist in viewing or hearing the meeting or reading agendas and minutes for the meetings, please contact the City Clerk's Office at 954-828-5002 and arrangements will be made to provide these services to you.

FORT LAUDERDALE EXECUTIVE AIRPORT

6000 N.W. 21ST AVENUE, SUITE 200, FORT LAUDERDALE, FLORIDA 33309

TELEPHONE (954) 828-4955, FAX (954) 938-4974

Equal Opportunity Employer

Printed On Recycled Paper





Venice of America

CITY OF FORT LAUDERDALE

AVIATION ADVISORY BOARD FORT LAUDERDALE EXECUTIVE AIRPORT ADMINISTRATIVE OFFICE - MULTIPURPOSE ROOM 6000 NW 21 AVENUE, FORT LAUDERDALE, FL THURSDAY, JANUARY 23, 2014, 1:30 P.M.

Board Members	Attendance	Cumulative Attendance 7/13 through 6/14	
		Present	Absent
Ron Carlson	P	6	0
Jeffrey Fauer	P	2	0
Linda Iversen, Chair	P	6	0
Patrick Kerney	A	3	3
Stephen O'Malley, Vice Chair	P	5	1
Stephen Stella	A	4	2
Mark Volchek	P	4	2
Pamela Bushnell, Commissioner City of Tamarac [non-voting]	P	5	1
Jeff Helyer, City of Oakland Park [non-voting]	P	6	0

Airport Staff

Clara Bennett, Deputy Director, Transportation and Mobility/Airport Manager
 Mark Cervasio, Assistant Airport Manager
 Rufus James, Assistant Airport Manager
 Fernando Blanco, Airport Engineer
 Florence Straugh, Noise Abatement Officer
 Scott Kohut, Airport Operations Supervisor
 Karen Reese, Business Outreach & FTZ Administrator
 Diana McDowell, Administrative Assistant II
 Angelia Basto, Administrative Aide
 Eden Volkert, Graphic Designer
 Laura Morton, Airport Programs Administrative Aide

CALL TO ORDER

Vice Chair Iversen called the meeting to order at 1:32 p.m.

Roll was called and it was determined a quorum was present.



VOTING ITEMS

1. Election of Chair

Motion made by Mr. Volchek, seconded by Mr. O'Malley to elect Vice Chair Iversen. In a voice vote, motion passed unanimously.

Election of Vice Chair

Motion made by Mr. Carlson, seconded by Mr. Volchek to elect Mr. O'Malley. In a voice vote, motion passed unanimously.

2. Approve Minutes of December 5, 2013 Meeting

Motion made by Vice Chair O'Malley, seconded by Mr. Volchek, to approve the staff recommendation. In a voice vote, motion passed unanimously.

3. FDOT Public Records Form 375-030-61

It was recommended that the City incorporate a Public Records Form into current projects as required.

Motion made by Mr. Volchek, seconded by Mr. Carlson, to approve the staff recommendation. In a voice vote, motion passed unanimously.

4. RFP #545-11298, Airport Security Services

It was recommended that the City award a three year contract with two one year renewals to AlliedBarton Security Services LLC in the estimated annual amount of \$372,250.

Motion made by Vice Chair O'Malley, seconded by Mr. Volchek, to approve the staff recommendation. In a voice vote, motion passed unanimously.

5. Termination of Lease Agreement – Parcel 8D Lease with Performance Trading, Inc.

It was recommended that the City terminate the lease for Parcel 8D with Performance Trading, Inc. in accordance with Paragraph 16 of the lease if Performance Trading fails to agree to the previously approved lease amendment and pay the 2010 property taxes by February 19, 2014.

Motion made by Mr. Volchek, seconded by Mr. Carlson, to approve the staff recommendation. In a voice vote, motion passed unanimously.

UPDATE ITEMS

A. Noise Compatibility Program

Ms. Straugh provided an update.

B. Development and Construction

Mr. Kohut provided an update.

C. Arrearages

Ms. McDowell provided an update.

D. Communications to the City Commission

The Board had nothing to communicate to the City Commission.

E. FLL Update

Ms. Straugh provided an update.

F. WALK ON ITEM – Parcel 9 Lease with Aero Toy Store, LLC

Ms. Bennett provided an update.

Other Items and Information

Mr. Cervasio stated that he would be out of town during the next scheduled board meeting and provided a few alternate dates. The board agreed by consensus to move the February meeting date to Friday, February 21, 2014.

There being no further business before the Board, the meeting adjourned at 2:20 p.m.


➤ Next scheduled meeting: February 21, 2014 – 1:30 p.m.

[Minutes prepared by Angelia Basto, Administrative Aide]

PLEASE NOTE:

If a person decides to appeal any decision made with respect to any matter considered at this public meeting or hearing, he/she will need to ensure that a verbatim record of the proceedings is made, which record includes the testimony and evidence upon which the appeal is to be based.

ITEM 2

DATE: March 21, 2014
TO: Aviation Advisory Board
FROM: Mark J. Cervasio, Acting Airport Manager 
BY: Fernando Blanco, Airport Engineer
SUBJECT: RFQ #946-11345 – General Engineering Construction Management Services for U.S. Customs and Border Protection Facility – Adoption of CSNC Rankings and Authorization to Negotiate with Top-Ranked Firms

The U.S. Customs and Border Protection Facility is currently under construction and is scheduled to be completed by March 2015. In order to assist the City with administering the construction of the facility, the City prepared a Request for Qualifications (RFQ) and Scope of Services to select a construction management firm to provide the following services: participate in bi-weekly construction meetings and provide meeting minutes, schedule site visits during construction to visually observe the progress of the project and general compliance with the plans, issue field orders in coordination with City's construction manager; review change orders and provide written explanations of their cause, review and approve the Contractor's shop drawings, product data, samples, and other submittal data, prepare close-out project documentation, assist the City in resolving claims and disputes.

The RFQ was issued on January 21, 2014 and five (5) responses were received on March 19, 2014. An Evaluation committee was established to review the submittals and shortlist a minimum of three (3) firms for further evaluation. The Committee convened on March 3, 2014 and shortlisted the following three (3) firms (listed in alphabetical order):

Atkins North America
ACAI, Inc.
Calvin Giordano Associates


On March 17th and 18th, 2014 the Committee attended presentations by the short-listed firms. After presentations were completed, the Committee carefully reviewed the firms and recommends the following rankings:

1. ACAI, Inc.
2. Atkins North America
3. Calvin Giordano & Associates

Staff Recommendation

Staff recommends the adoption of the Evaluation Committee's recommendations for ranking the firms, and authorization to negotiate with the top-ranked firm, or successively ranked firms, if negotiations with the higher ranked firm are not satisfactory, for the U.S. Customs and Border Protection Facility.

ITEM 3

DATE: March 21, 2014
TO: Aviation Advisory Board
FROM: Mark J. Cervasio, Acting Airport Manager 
BY: Fernando Blanco, Airport Engineer
SUBJECT: Executive Airport – U.S. Customs and Border Protection Facility –
Memorandum of Agreement to Reimburse Customs and Border Protection
for Providing Information Technology Services – Project 11242

The U.S. Customs and Border Protection Facility is currently under construction with an anticipated completion date of March 2015. As part of equipping the facility prior to it becoming operational, Customs and Border Protection (CBP) was to purchase and install all Information Technology equipment and services. However, due to budget cuts resulting from the sequestration in 2013 funds were no longer available to fund the equipment purchase and installation. The Airport was informed of the changes in March 2013 (Exhibit 1). As a result, the City is now required to enter into a Memorandum of Agreement (MOA) with CBP to reimburse them for the purchase, installation, connectivity, and equipment upgrades of the Automated Data Processing equipment.

This equipment includes workstations, monitors, network switches, scanners, fingerprint scanners, cameras, printers, and additional equipment for a complete working system. The estimated amount for the above equipment and services is estimated at \$208,349.68. The MOA also includes annual support costs for the services in the amount of \$5,179.32 (Exhibit 2).

Staff has reviewed the MOA with the City's Legal Department and Procurement Services Department and both departments have no objection to proceeding with the agreement.

Staff Recommendation

Staff recommends the adoption of a Memorandum of Agreement to reimburse Customs and Border Protection for providing Information Technology equipment and services estimated at \$208,349.68 and annual support costs for the services in the amount of \$5,179.32 for the U.S. Customs and Border Protection Facility.



**U.S. Customs and
Border Protection**

March 12, 2013

Mr. Fernando Blanco
Airport Engineer
City of Fort Lauderdale
100 North Andrews Avenue
Fort Lauderdale, FL 33301

Dear Mr. Blanco:

In 2011, funding support for free space was modified per 19 CFR 122.11(b)(2), 19 CFR 122.11(c) and 19 CFR 122(d)(2). This modification includes the requirement that all aspects of CBP free space construction be provided by the airport. We were initially successful in having the funds to support the construction of the new facility carried over as project design began prior to the implementation of these directives. However, as a result of sequestration and overall funding cuts, funds are no longer available for CBP to fund any aspect of free space construction.

At the Fort Lauderdale Executive Airport GAF, the plan was that CBP would pay OIT infrastructure. This includes all equipment in the LAN Room and initial circuit costs. OIT is currently preparing an estimate of these costs. Every effort will be made to minimize the costs associated with the project. The OIT budget estimate will be provided to you in the form of a reimbursable agreement. Upon receipt of the signed agreement, the equipment will be ordered by CBP with the understanding that the City of Fort Lauderdale will reimburse CBP for the costs.

Notify me with your decision on whether or not you plan to continue the project.

We look forward to working with you to complete this project.

Thank you.

Sincerely,

A handwritten signature in black ink, appearing to read "Debra K. Totten".

Debra K. Totten
Project Manager

CC: Jorge Roig
Leona Haynes
Sheryl Arnold
Livia Blair
Marilyn Ribauda
Alex Lopez

**U.S. Customs and Border Protection
Office of Information & Technology
Landing Rights
Cost Sign-Off Document***

(*Actual costs will be derived from actual obligations)

This is a Rough Order of Magnitude Estimate.

Final costs will be determined once the network designs are completed

Site: Ft. Lauderdale Executive Airport

Date Prepared: 3/14/2013, 7/31/2013

Preparer: Donald R Mitchell

Equipment Costs

Line Item	Description	Qty	Unit Cost	Total
1	Steelhead SHA-01050L Riverbed appliance without RSP module; Steelhead 1050 with 4 onboard GbE bypass ports (800 conn/8Mbps) ; 2GB memory for SH1050/2050/5050; Add on Power supply for SH1050/2050-C; Gold level annual support for Steelhead Appliance 1050 Series	1	\$21,000.00	\$21,000.00
2	Cisco Catalyst 3750X 48-port POE+, Layer-3, Stackable Switch (BRAND NAME or EQUIVALENT) with Catalyst 3750X 48 Port Full PoE IP Base CAT 3750X IOS UNIVERSAL WITH WEB BASE DEV MGR C3750X-48 IP Base to IP Services factory IOS Upgrade Cisco StackWise 50CM Stacking Cable Catalyst 3750X Stack Power Cable 30 CM AC Power Cord for Catalyst 3K-X (North America) Catalyst 3K-X 1100W AC Power Supply Catalyst 3K-X 1100W AC Secondary Power Supply Catalyst 3K-X 1G Network Module SMARTNET 24X7X4 Catalyst 3750X 48 Port Full PoE IP Base	1	\$15,000.00	\$15,000.00
4	SUA2200RM2U APC (Brand Name or Equivalent) SmartUPS, 1980 Watts / 2200 VA, Input 120V/ Output 120V, Interface Port DB-9 RS-232, SmartSlot, Rack Height 2 U; NEMA 5-20R to L5-20P cable Adapter	1	\$1,200.00	\$1,200.00
5	Standard Workstation with Monitor Featuring: Dell 980 Optiplex (Brand Equivalent) Desktop Workstation Base Unit: • Ships from factory preset to Energy Star 5.0 Cat A, B, C, or D rating. In accordance with Executive Order (E.O.) 13423, Part 23 of the Federal Acquisition Regulation (FAR), and Department of Homeland Security Management Directive 025-01, Sustainable Practices for Environmental, Energy and Transportation Management Executive Order 13514 Federal Leadership in Environmental, Energy, and Economic Performance, Section 2(h)(i), requires agencies to promote "electronics stewardship" by 1. Ensuring procurement preference for EPEAT-registered electronic products; 2. Establishing and implementing policies to enable power management, duplex printing, and other energy-efficient or environmentally preferable features on all eligible agency electronic products;	9	\$1,400.00	\$12,600.00

Line Item	Description	Qty	Unit Cost	Total
	<p>3. Employing environmentally sound practices with respect to the agency's disposition of all agency excess or surplus electronic products;</p> <p>4. Ensuring the procurement of Energy Star and FEMP designated electronic equipment; and</p> <p>5. Implementing best management practices for energy-efficient management of servers and Federal data centers</p> <p>Manufacturer must meet EPEAT Silver certification at a minimum with progress towards Gold certification. EPEAT Gold Certification is preferred.</p> <ul style="list-style-type: none"> • ATX, Micro-ATX, or BTX chassis, with power supply and motherboards uniquely designed to manage heat throughout the system. • Thermal-management technology using variable speed fans for additional cooling, while using less power and generating less noise. • Thermal Sensor — Measures the incoming ambient air temperature to appropriately control internal cooling and helps improve thermal reliability. <p>Power Supply:</p> <ul style="list-style-type: none"> •305W AC Input Voltage Range of 100 to 240 VAC AC Input Frequency of 47HZ/63 Hz <p>Processor: •Core 2 Quad, 8400/2.66GHz, 4M, 1333FSB Or Better</p> <p>Chipset: •Intel Q43/Q45 Express Chipset Part: 82Q43/82Q45 or newer</p> <p>Memory: •Minimum 4GB DDR3 With 2 empty usable memory slots available</p> <p>Hard Drive: •160GB SATA 3.0Gb/s and 8MB Data Burst Cache or SSD If Available</p> <p>Video Card:</p> <ul style="list-style-type: none"> • Non-Integrated 256MB Graphics Card with WDDM 1.0 or higher • Dual DVI and VGA support up to 2 monitors. • Must be capable of up to 1680 X 1050 resolutions and 1024 X 768 standard. • Quad monitor support option (uses nVidia NVS420 for 4 <p>Floppy Drive: 3.5 inch, 1.44MB, Floppy Drive (Optional) Or External USB Floppy Drive As Needed</p> <p>Optical Drive:</p> <ul style="list-style-type: none"> • 6X DVD+/-RW minimum • Capable of read/write for DVD and CD-ROM <p>Network Card:</p> <ul style="list-style-type: none"> • Integrated NIC support 10/100/1000 MB/s • Wake On LAN capable. <p>Power Management:</p> <ul style="list-style-type: none"> • Able to set power on Everyday or Weekdays at the time set in Auto Power Time. • Able to set Low Power Consumption Mode on/off to conserve power. • Able to set different Power Suspend Modes to conserve power (Monitor, CPU, Hard Drive) <p>Sound Card: Integrated Intel High Definition Audio</p> <p>Keyboard and Mouse:</p> <ul style="list-style-type: none"> • USB 104 Keyboard W/PIV Reader • USB Optical Mouse <p>USB Connections:</p> <ul style="list-style-type: none"> • Up to 8 USB connections on the unit • 6 rear and 2 front recommended configuration on the unit 			

Line Item	Description	Qty	Unit Cost	Total
	<p>Expandable:</p> <ul style="list-style-type: none"> • Minimum 2 available usable PCI slots to add optional cards as needed. • Firewire card may use one of these slots as needed. <p>Ports:</p> <ul style="list-style-type: none"> • Serial port • Parallel port (Optional) • External SATA Port <p>Security: • Trusted Platform Module version 1.2</p> <p>Features:</p> <ul style="list-style-type: none"> • BIOS flash upgrade capability must be provided. • Desktop and smaller form factor workstation • Toolless design case, all parts except motherboard can be serviced and swapped without tools. Power supplies, disks, cards, optical drives <p>Service:</p> <ul style="list-style-type: none"> • 3 Years Basic Support: Next Business Day Parts and Labor Onsite Response. • Hardware Documentations, Manufacture Applications and Drivers provided via CD or DVD. • Hard Drive Retention Service (No RMA of failed drives) • Vendor must host their own manuals, drivers and applications for download. (No link to third party website). • Global service and support. • Must be able to provide roadmap review every 6 months. <p>OEM Operating Systems:</p> <ul style="list-style-type: none"> • Windows 7 (32bit and 64bit) • Capable to downgrade to Windows XP as needed <p>Monitor: 2009W 20-inch Wide Screen Flat Panel 1680 X 1050 resolution (MINIMUM)</p> <ul style="list-style-type: none"> • 2000:1 contrast ratio • 5ms (black -to-white) response time for crisp images • Integrated speakers • Display privacy filter • 170degree horizontal and 160 vertical viewing angle • 5-year Advance Exchange Warranty 			
6	<p>USV10PRNT.21223-I(USV10PRNT) Desktop without Monitor Standard Desktop Requirements Definition Slim line form factor Desktop form factor Tower Workstation</p> <p>Base Unit:</p> <ul style="list-style-type: none"> • Ships from factory preset to Energy Star 5.0 Cat A, B, C, or D rating. <p>In accordance with Executive Order (E.O.) 13423, Part 23 of the Federal Acquisition Regulation (FAR), and Department of Homeland Security Management Directive 025-01, Sustainable Practices for Environmental, Energy and Transportation Management Executive Order 13514 Federal Leadership in Environmental, Energy, and Economic Performance, Section 2(h)(i), requires agencies to promote “electronics stewardship” by:</p> <p>1. Ensuring procurement preference for EPEAT-registered electronic products;</p>	7	\$1,250.00	\$8,750.00

Line Item	Description	Qty	Unit Cost	Total
	<p>2. Establishing and implementing policies to enable power management, duplex printing, and other energy-efficient or environmentally preferable features on all eligible agency electronic products;</p> <p>3. Employing environmentally sound practices with respect to the agency's disposition of all agency excess or surplus electronic products;</p> <p>4. Ensuring the procurement of Energy Star and FEMP designated electronic equipment; and</p> <p>5. Implementing best management practices for energy-efficient management of servers and Federal data centers Manufacturer must meet EPEAT Silver certification at a minimum with progress towards Gold certification. EPEAT Gold Certification is preferred.</p> <ul style="list-style-type: none"> • ATX, Micro-ATX, or BTX chassis, with power supply and motherboards uniquely designed to manage heat throughout the system. • Thermal-management technology using variable speed fans for additional cooling, while using less power and generating less noise. • Thermal Sensor — Measures the incoming ambient air temperature to appropriately control internal cooling and helps improve thermal reliability. <p>Power Supply: Desktop Base Minimum 88 Percent Efficient Power Supply 235W AC Input Voltage Range of 100 to 240 VAC AC Input Frequency of 47HZ/63 Hz 255W AC Input Voltage Range of 100 to 240 VAC AC Input Frequency of 47HZ/63 Hz 305W AC Input Voltage Range</p> <p>Processor: Core 2 Quad, 8400/2.66GHz, 4M, 1333FSB Or Better Chipset: Intel Q43/Q45 Express Chipset Part: 82Q43/82Q45 or newer Memory: Minimum 4GB DDR3 With 2 empty usable memory slots available</p> <p>Hard Drive: 160GB SATA 3.0Gb/s and 8MB Data Burst Cache or SSD If Available Video Card: <ul style="list-style-type: none"> • Non-Integrated 256MB Graphics Card with WDDM 1.0 or higher • Dual DVI and VGA support up to 2 monitors. • Must be capable of up to 1680 X 1050 resolutions and 1024 X 768 standard. • Quad monitor support option (uses nVidia NVS420 for 4 <p>Floppy Drive: 3.5 inch, 1.44MB, Floppy Drive (Optional) Or External USB Floppy Drive As Needed Optical Drive: <ul style="list-style-type: none"> • 16X DVD+/-RW minimum • Capable of read/write for DVD and CD-ROM <p>Network Card: <ul style="list-style-type: none"> • Integrated NIC support 10/100/1000 MB/s • Wake On LAN capable. <p>Power Management: <ul style="list-style-type: none"> • Able to set power on Everyday or Weekdays at the time set in Auto Power Time. • Able to set Low Power Consumption Mode on/off to conserve power. • Able to set different Power Suspend Modes to conserve power (Monitor, CPU, Hard Drive) • System can be powered up remotely from Power Suspend, Off, or Low Power Consumption Mode. <p>Sound Card: Integrated Intel High Definition Audio</p> </p></p></p></p>			

Line Item	Description	Qty	Unit Cost	Total
	<p>Keyboard and Mouse:</p> <ul style="list-style-type: none"> • USB 104 Keyboard W/PIV Reader • USB Optical Mouse <p>USB Connections:</p> <ul style="list-style-type: none"> • Up to 8 USB connections on the unit • 6 rear and 2 front recommended configuration on the unit <p>Expandable:</p> <ul style="list-style-type: none"> • Minimum 2 available usable PCI slots to add optional cards as needed. • Firewire card may use one of these slots as needed. <p>Ports:</p> <ul style="list-style-type: none"> • Serial port • Parallel port (Optional) • External SATA Port <p>Security: • Trusted Platform Module version 1.2</p> <p>Features:</p> <ul style="list-style-type: none"> • BIOS flash upgrade capability must be provided. • Desktop and smaller form factor workstation • Toolless design case, all parts except motherboard can be serviced and swapped without tools. Power supplies, disks, cards, optical drives • Raid 0 or 1 for additional performance or data protection. • Chassis Intrusion switch (can notify helpdesk and logs when chassis is opened). • BIOS multi-level security settings, including Administrator password, System boot password, BIOS password. • Ability to store Asset tag or other tracking number in BIOS (this is in addition to the service tag stored in BIOS). • Ability to override password reset jumper (if machine is lost/stolen, can't just pull jumper to reset BIOS passwords). • Ability to integrate system management with in-house tools, including ability to remotely manage BIOS updates and BIOS settings. • LED diagnostic Lights on front chassis to assist Helpdesk with diagnosis/Troubleshooting/service dispatch (bad DIMM, Hard disk, NIC, CPU, graphics card, BIOS, etc.) <p>Service:</p> <ul style="list-style-type: none"> • 3 Years Basic Support: Next Business Day Parts and Labor Onsite Response. • Hardware Documentations, Manufacture Applications and Drivers provided via CD or DVD. • Hard Drive Retention Service (No RMA of failed drives) • Vendor must host their own manuals, drivers and applications for download. (No link to third party website). • Global service and support. • Must be able to provide roadmap review every 6 months. <p>OEM Operating Systems:</p> <ul style="list-style-type: none"> • Windows 7 (32bit and 64bit) • Capable to downgrade to Windows XP as needed <p>Core Applications on CBP Image to be loaded by CBP post</p>			

Line Item	Description	Qty	Unit Cost	Total
	Delivery: <ul style="list-style-type: none"> • Microsoft Office 2007 Plus w/SP2 • Microsoft Visio Viewer 2007 • Adobe Reader 9.1 • Adobe Flash 10.X • Shockwave Player 11.X • McAfee Antivirus Client 8.7i • Microsoft .NET Framework APC SurgeArrest Essential - surge suppressor AC 120 V Firewire PCI Card by Unibrain & adapter			
7	DELL P2210, 22 inch VIS Professional or Equal Widescreen display (10-Print Configuration) featuring: 3YR Limited Warranty Monitor, Advanced Exchange (986-4872) AX510 black Sound Bar for UltraSharp Flat Panel DisplaysDell Optiplex/Precision/ Latitude, Customer In (313-6412) 22.0" PRYINGEYES WIDESCREEN Frameless Privacy Filter (Width 18.74" x Height 10.55" 416:09 Aspect Ratio).	7	\$225.00	\$1,575.00
8	CrossMatch Guardian V Scanner #920098-002. Dimensions 6" x 6" x 4.7" (152 mm x 152 mm x 120 mm). Weight 4.0 lbs. (1.8 kg). Sealed, rugged case with high tolerance for shock and vibration. Rubber overmold for sure handling and shock absorption. Lighted platen power status indicator. Green illuminated pictograms guide the user through image capture. Auto capture feedback through four LED lights indicating image quality. Heated platen to eliminate condensation and halo effect. Single cable IEEE 1394 interface for data and power, 400 Mbits/s speed, OHCI compliant – no separate power supply needed. Accepts standard security cable. Optional ambient light shield for use in direct sunlight.	7	\$5,500.00	\$38,500.00
9	Crossmatch L-Guarding 10 print finger print scanner mounts for US Visit	7	\$500.00	\$3,500.00
10	USVISIT - 3M Passport Reader, Model AT9000	7	\$2,200.00	\$15,400.00
11	LogicTech Quickcam Pro 9000 - Carl Zeiss® lens Autofocus system Ultra-high resolution 2-megapixel sensor with RightLight™2 Technology Color depth: 24-bit true color Video capture: Up to 1600 x 1200 pixels (HD quality) (HD Video 960 x 720 pixels) Frame rate: Up	7	\$100.00	\$700.00
12	Ledco Flex Arms for camera compliant with the Logitech 900: 1-prong universal base 1-12" Flex Arm; 1-3" Aluminum Extension; 1-6" Aluminum Extension; 4- Automotive grade zip ties	7	\$90.00	\$630.00
13	HP Photosmart eStation All-in-One Printer C510a; up to 33 ppm: up to 600x600 black print quality; up to 9600x2400 optimized dpi color printing; up to 1200 optimized dpi for copy resolution; up 19.200 dpi scan resolution, two sided printing automatic; input capacity 250 sheets; output capacity 50 sheets; 64 MB memory, 7 inch touchscreen; include USB-6 ES A to B USB Cable 6-foot	5	\$350.00	\$1,750.00
14	LaserJet 4015x printer; 52 ppm; HP PCL 6, HP PCL5e, PostScript Level 3 emulation; 225,000 pages monthly duty cycle; 3 Standard Paper Trays; 128MB standard memory, expandable to 256MB; 128MB memory upgrade; Automatic Duplexing Unit; Installation of Memory into printer; 1 year Return to HP limited warranty.	1	\$1,700.00	\$1,700.00
15	ScanJet 8390	1	\$1,400.00	\$1,400.00

Line Item	Description	Qty	Unit Cost	Total
16	APC (Brand Name or Equivalent) Surge Protector, number of outlets - 6; Receptacle Style NEMA 5-15r; input: nominal input voltage 120V, frequency 50/60 HZ +/- 5 HZ (auro sensing). Input connections NEMA 5-15P; maximum line current per phase 15Amps; Cord length 1.83 meters; surge protection and filtering; surge energy rating 490 Joules eP Joules Rting 1080 EMI/RFI noise rejection (100 kHz to 10 MHz) 20 dB peak current national mode 10kAmpt peak current common mode 20 kAmps let through voltage rating <330 power strips for all workstations and printers	25	\$14.00	\$350.00
17	Cables To Go (Brand of equivalent) 2U (3.5inch) Horizontal Cable Management Panel	2	\$35.00	\$70.00
18	Cables To Go (Brand of equivalent) 2U (3.5inch) Cable management panel with 5 D-rings	2	\$35.00	\$70.00
19	Cables to Go 29012 10ft CAT 6 550 MHz Snagless Patch cables Blue	30	\$18.00	\$540.00
20	Cables to Go 29018 14ft CAT 6 550 MHz Stranded Snagless Patch cables Blue	30	\$21.00	\$630.00
21	Cables To Go 22807 25ft CAT 6 550 MHz Stranded Snagless Patch cables Blue	2	\$20.00	\$40.00
22	Self Gripping Strap Back-to-Back Polypropylene Hook Nylon Loop Shape Cut to Length Roll Length 25 yd.	1	\$30.00	\$30.00
23	VolP Phone System with 20 Phone Sets	1	\$43,000.00	\$43,000.00
24	10% Pricing Contingency due to bid variations	1	\$16,843.50	\$16,843.50
Total Equipment Cost:				\$185,278.50
<u>Circuit Costs:</u>				
25	Verizon T-1 Circuit Non Recuring Costs (Installation) - ESTIMATED	1	\$13,391.86	\$13,391.86
26	Verizon T-1 Monthly Recuring Costs - ESTIMATED	12	\$431.61	\$5,179.32
Total Annual Circuit Costs:				\$18,571.18
<u>Travel / Installation Costs:</u>				
27	Travel for Data Engineers	1	\$3,000.00	\$3,000.00
28	Travel for Voice Engineers	1	\$1,500.00	\$1,500.00
Total Travel Costs:				\$4,500.00
TOTAL ESTIMATED INITIAL EQUIPMENT AND SERVICES COSTS				\$208,349.68
<u>Annual Service Costs:</u>				
29	Verizon T-1 Monthly Recuring Costs - ESTIMATED	1	\$5,179.32	\$5,179.32
Total Estimated Annual Service Costs				\$5,179.32
<u>Acceptance</u>				
By signing below, I accept any and all costs associated with the purchase and installation of equipment itemized above.				
_____ Air Port Representative			_____ Date	

ITEM 4

DATE: March 21, 2014
TO: Aviation Advisory Board
FROM: Mark J. Cervasio, Acting Airport Manager *MJC*
BY: Fernando Blanco, Airport Engineer
SUBJECT: Airfield Lighting Computer Controlled Monitoring System – Project 11909


The Fort Lauderdale Executive Airport Air Traffic Control Tower (ATCT) is currently under construction with an anticipated completion date of October 2014. As part of the construction of the ATCT, the Airport is required to provide a new Federal Aviation Administration (FAA) approved Airfield Lighting Computer Controlled Monitoring System (ALCCMS) to be located in the Tower cab and electrical vault. This system will enable the tower to more efficiently and effectively control the airfield lighting and signage system and also provide a separate back-up system.

Design was completed in February 2014 by the Airport's General Aviation Consultant, Kimley-Horn and Associates, Inc., and advertised on February 26, 2014 through the City's Procurement Services Division. Bids are scheduled to be opened on March 26, 2014.

Staff Recommendation

Prior to the Board meeting, Staff will prepare a bid tabulation and make a recommendation to award the bid to the low responsive bidder at the March 27, 2014 Aviation Advisory Board meeting.

ITEM 5

DATE: March 21, 2014
TO: Aviation Advisory Board
FROM: Mark J. Cervasio, Acting Airport Manager 
BY: Karen Reese, Business Outreach & FTZ Administrator
SUBJECT: Foreign-Trade Zone 241 – Operator Agreement with Marina Mile Yachting Center

The City of Fort Lauderdale established Foreign-Trade Zone 241 (FTZ 241) on April 19, 2000 under a Grant of Authority from the Foreign-Trade Zones Board (US Secretary of Commerce and US Secretary of Treasury). The goal of the program was to promote development of the Executive Airport Industrial Airpark, serve businesses engaged in international commerce in the greater Fort Lauderdale area, and maximize the City's business retention and attraction efforts.

Background on the City's Foreign-Trade Zone

Congress enacted legislation implementing the FTZ program in 1934 in order to increase foreign investment, job creation, and economic activity in the United States. The legislation defines a Foreign-Trade Zone as a parcel of land deemed to be outside the United States for purposes of duty assessment. Companies located in an FTZ are able to defer, reduce, and/or eliminate import duties and any applicable duty is levied only when goods are withdrawn from the FTZ and entered into the commerce of the United States.

Originally, seven area sites, totaling 1,266 acres, were included in the FTZ with Fort Lauderdale Executive Airport and Industrial Airpark serving as the hub site. In 2005 the Zone was restructured to five sites totaling 1,219 acres with the removal of certain ineligible sites.

On April 30, 2013 the Zone was reorganized under the Alternative Site Framework (ASF), which allows for faster, more efficient designation and activation of eligible companies. As part of this process, the Zone was further restructured to remove one site and reduce the designated acreage to 873 acres.

Operator Agreement

A Grantee is an entity to which the privilege of establishing, operating, and maintaining an FTZ has been granted by the FTZ Board. The City is the Grantee of FTZ 241. An Operator is a corporation, partnership, or person that operates a Zone or Subzone under the terms of an agreement with a Grantee. As Grantee, the City may function as an Operator and retain unto itself the responsibility for all transactions and interactions with Customs and Border Protection (CBP), or alternatively, may act solely as the Grantee and enter into an Operator Agreement with one or more separate entities to perform those functions.

The City's FTZ program allows companies with the appropriate level of expertise and need to conduct Zone activities at their respective sites by entering into an Operator Agreement. The City has entered into Operator Agreements with Wartsilla North America, activated in 2005 and Fairn & Swanson, Inc., activated in 2010, Corropack activated in 2014, and Hellmann Worldwide Logistics currently is awaiting activation.

Since FTZ-241 was established in 2000 through 2013 FTZ 241 had two activated zones. Staff is pleased to report for 2014, two zones have been activated and two additional applications are pending for a total of four additional zones to date.

Marina Mile Yachting Center a full service Fort Lauderdale boatyard has requested to become an Operator in the City of Fort Lauderdale's Foreign Trade Zone (FTZ) administered by the Executive Airport. If approved, Marina Mile will become the first marina nationwide to initiate marina operations in a Foreign-Trade Zone.

If approved, Marina Mile Yachting Center will become the fifth Operator in the program. Marina Mile Yachting Center is a full-service Fort Lauderdale Boatyard, in the heart of the "Marina Mile," and the new river area. The Marina offers an extensive network of the top marine industry contractors and marine professionals. The six acre shipyard provides secure affordable, deep water dockage for yacht owners, captains, and contractors who wish to capitalize on the very best marine services that the Fort Lauderdale shipyard has to offer.

Summary of Operator Agreement Terms

The proposed Operator Agreement will be for a five year term with a five year renewal and will establish Marina Mile Yachting Center responsibilities for the operation and management of the site in accordance with CBP and FTZ Board regulations as well as all other applicable federal, state, and local laws, rules and regulations. The authority granted is not exclusive, and does not preclude the City from entering into Operator Agreements with other entities for FTZ operations.


The Operator Agreement will require that Marina Mile Yachting Center maintain a CBP Bond for operation of the site. Further, requirements for recordkeeping, indemnification and insurance, default and termination, administrative fees and CBP expenses will be established. Additionally, Marina Mile Yachting Center is required to submit an activation request to CBP, outlining their Zone procedures at the new site before they can become an FTZ Operator.

The City's fee schedule requires payment of a \$2,500 application fee for the site designation, a \$5,000 activation fee once Marina Mile Yachting Center are approved by CBP, and an \$8,000 annual fee once the site is operational.

Staff Recommendation

Staff recommends that the City enter into an Operator Agreement with Marina Mile Yachting Center, Inc., subject to approval of a Minor Boundary Modification for a Usage Driven Site by the Foreign-Trade Zones Board and approval of an activation request by U.S. Customs and Border Protection.

ITEM 6

DATE: March 21, 2014
TO: Aviation Advisory Board
FROM: Mark J. Cervasio, Acting Airport Manager 
BY: Karen Reese, Business Outreach & FTZ Administrator
SUBJECT: Foreign-Trade Zone 241 – Operator Agreement with DFC Services Corporation

DFC Services Corporation (DFC), a warehousing and distribution company has requested to become an Operator in the City of Fort Lauderdale's Foreign-Trade Zone (FTZ) administered by Executive Airport.

The City of Fort Lauderdale established Foreign-Trade Zone 241 (FTZ 241) on April 19, 2000 under a Grant of Authority from the Foreign-Trade Zones Board (US Secretary of Commerce and US Secretary of Treasury). The goal of the program was to promote development of the Executive Airport Industrial Airpark, serve businesses engaged in international commerce in the greater Fort Lauderdale area, and maximize the City's business retention and attraction efforts.

Background on the City's Foreign-Trade Zone

Congress enacted legislation implementing the FTZ program in 1934 in order to increase foreign investment, job creation, and economic activity in the United States. The legislation defines a Foreign-Trade Zone as a parcel of land deemed to be outside the United States for purposes of duty assessment. Companies located in an FTZ are able to defer, reduce, and/or eliminate import duties and any applicable duty is levied only when goods are withdrawn from the FTZ and entered into the commerce of the United States.

Originally, seven area sites, totaling 1,266 acres, were included in the FTZ with Fort Lauderdale Executive Airport and Industrial Airpark serving as the hub site. In 2005 the Zone was restructured to five sites totaling 1,219 acres with the removal of certain ineligible sites.

On April 30, 2013 the Zone was reorganized under the Alternative Site Framework (ASF), which allows for faster, more efficient designation and activation of eligible companies. As part of this process, the Zone was further restructured to remove one site and reduce the designated acreage to 873 acres.

Operator Agreement

A Grantee is an entity to which the privilege of establishing, operating, and maintaining an FTZ has been granted by the FTZ Board. The City is the Grantee of FTZ 241. An Operator is a corporation, partnership, or person that operates a Zone or Subzone under the terms of an agreement with a Grantee. As Grantee, the City may function as an Operator and retain unto itself the responsibility for all transactions and interactions with Customs and Border Protection (CBP), or alternatively, may act solely as the Grantee and

enter into an Operator Agreement with one or more separate entities to perform those functions.

The City's FTZ program allows companies with the appropriate level of expertise and need to conduct Zone activities at their respective sites by entering into an Operator Agreement. The City has entered into Operator Agreements with Wartsilla North America, activated in 2005 and Fairn & Swanson, Inc., activated in 2010, Corropack activated in 2014 and Hellmann Worldwide Logistics currently is awaiting activation. Marina Mile Yachting Center has also submitted an application and will be the fifth operator.

Since FTZ-241 was established in 2000 through 2013 FTZ 241 had two activated zones. Staff is pleased to report for 2014, two zones have been activated and two additional applications are pending for a total of four additional zones to date.

If approved, DFC will become the sixth Operator in the program. DFC is the distributing platform for operations in 20 countries, specializing in products such as jewelry and watches. Operating more than seventy shops located at airports, cruise liners, seaports, hotels and other tourist locations, DFC provides its customers with prestigious brands from more than two hundred fifty suppliers.

Summary of Operator Agreement Terms

The proposed Operator Agreement will be for a five year term with a five year renewal and will establish DFC's responsibilities for the operation and management of the site in accordance with CBP and FTZ Board regulations as well as all other applicable federal, state, and local laws, rules and regulations. The authority granted is not exclusive, and does not preclude the City from entering into Operator Agreements with other entities for FTZ operations.


The Operator Agreement will require that DFC maintain a CBP Bond for operation of the site. Further, requirements for recordkeeping, indemnification and insurance, default and termination, administrative fees and CBP expenses will be established. Additionally DFC is required to submit an activation request to CBP, outlining their Zone procedures at the new site before they can become an FTZ Operator.

The City's fee schedule requires payment of a \$2,500 application fee for the site designation, a \$5,000 activation fee once DFC Services procedures are approved by CBP, and an \$8,000 annual fee once the site is operational.

Staff Recommendation

Staff recommends that the City enter into an Operator Agreement with DFC Services Corp., subject to approval of a Minor Boundary Modification for a Usage Driven Site by the Foreign-Trade Zones Board and approval of an activation request by U.S. Customs and Border Protection.

ITEM 7

DATE: March 21, 2014
TO: Aviation Advisory Board
FROM: Mark J. Cervasio, Acting Airport Manager 
BY: Karen Reese, Business Outreach & FTZ Administrator
SUBJECT: Foreign-Trade Zone 241 – Resolution authorizing the City Manager, or designee, to execute Operating Agreements with Foreign Trade Zone Operators

Background

Congress enacted legislation implementing the FTZ program in 1934 in order to increase foreign investment, job creation, and economic activity in the United States. The legislation defines a Foreign-Trade Zone as a parcel of land deemed to be outside the United States for purposes of duty assessment. Companies located in an FTZ are able to defer, reduce, and/or eliminate import duties and any applicable duty is levied only when goods are withdrawn from the FTZ and entered into the commerce of the United States.

The City of Fort Lauderdale established Foreign-Trade Zone 241 (FTZ 241) on April 19, 2000 under a Grant of Authority from the Foreign-Trade Zones Board (US Secretary of Commerce and US Secretary of Treasury). The goal of the program was to promote development of the Executive Airport Industrial Airpark, serve businesses engaged in international commerce in the greater Fort Lauderdale area, and maximize the City's business retention and attraction efforts.

Originally, seven area sites, totaling 1,266 acres, were included in FTZ-241 with Fort Lauderdale Executive Airport and Industrial Airpark serving as the hub site. In 2005 the Zone was restructured to five sites totaling 1,219 acres with the removal of certain ineligible sites. On April 30, 2013 the Zone was reorganized under the Alternative Site Framework (ASF), which allows for faster, more efficient designation and activation of eligible companies. As part of this process, the Zone was further restructured to remove one additional inactive site and reduce the designated acreage to 873 acres.

As Grantee the City does not get involved in the actual operations pertaining to zone activities, but does sponsor companies to come into the zone and operate under the aforementioned Grant of Authority. The City's FTZ program allows companies with the appropriate level of expertise and need to conduct Zone activities at their respective sites by entering into an Operator Agreement with the City.

The resolution requested is beneficial in that it provides greater flexibility and responsiveness for establishing and managing FTZ sites to serve individual companies' needs by utilizing a more streamlined process. Staff will keep City Commission informed each time a Foreign Trade Zone application is submitted to the Foreign Trade Zone Board.

Recommendation

Staff recommends a resolution authorizing the City Manager to:

1. Submit applications to activate new foreign trade zone sites to the Foreign Trade Zones Board as the FTZ-241 Grantee for the purpose of expediting and attracting FTZ businesses.
2. Approve and Execute Foreign Trade Zone Operator Agreements on behalf of City of Fort Lauderdale as the FTZ-241 Grantee subject to approval of the Foreign Trade Zones Board and activation by the U.S. Customs.

ITEM 8

DATE: March 21, 2014
TO: Aviation Advisory Board
FROM: Mark J. Cervasio, Acting Airport Manager *MJC*
BY: Karen Reese, Business Outreach & FTZ Administrator
SUBJECT: RFP #545-11371, Foreign-Trade Zone Consultant Services

Airport staff worked with the City's Procurement Division to develop a Request for Proposal (RFP) to solicit qualified Foreign-Trade Zone (FTZ) firms for FTZ-241.

As Grantee for Foreign-Trade Zone 241 (FTZ-241) professional services are requested to provide recommendations to assure compliance with federal regulations and procedures. These services will serve to assist with developing, marketing, educating, recommending and reviewing the FTZ- 241 program.

The Transportation and Mobility Department is requesting approval for a one-year contract for Foreign-Trade Zone consulting services.

An RFP was issued on February 4, 2014 and solicited to numerous vendors. Due to only one vendor responding, the RFP was extended on February 27, 2014. Upon opening the RFP on March 13, 2014, the City received a single proposal.

Upon review of the bid, staff has determined that IMS Worldwide, Inc. has met all requirements of the RFP specifications and has been deemed the single responsive and responsible proposer.

Staff Recommendation

Staff recommends award of a one year contract with two one year renewals to IMS Worldwide, Inc. for the purchase of Foreign-Trade Zone consulting services for an estimated annual amount of \$76,000.

ITEM 9

DATE: March 21, 2014
TO: Aviation Advisory Board
FROM: Mark J. Cervasio, Acting Airport Manager 
BY: Scott Kohut, Airport Operations Supervisor
SUBJECT: Bid #543-11355 Earthwork Improvements – Parcels B, C, & D

Parcels B (10.014 acres), C (10.278 acres) and D (11.681 acres) in the Executive Airport Industrial Park were the subject of leases dated March 1, 2000, March 1, 2002 and March 1, 2003, respectively, between the City of Fort Lauderdale and Southern Facilities Development (SFD).

As a result of the lessee's failure to comply with the terms of the leases and its failure to address environmental violations created on Parcels C and D, the City Commission, at its February 15, 2011 Regular Meeting, adopted resolutions terminating the leases for the three parcels. The City has since completed all necessary environmental remediation and tree removal required to bring the properties into compliance with applicable county environmental standards including establishment of 2.852 acre Natural Resource Area on Parcel B, establishment of a 3.85 acre Natural Resource Area on Parcel D, and offsite mitigation at Mills Pond Park.

The properties require a significant amount of site work to prepare them for development. Elevations range from 3.84 feet National Geodetic Vertical Datum (NGVD) to 31.17 feet NGVD. Parcel C contains a large area of muck and Parcel D contains a large spoil pile and various concrete objects. In order to increase the marketability of the sites, staff prepared a bid to bring the sites to a uniform elevation of 8.0 feet NGVD utilizing fill from the spoil pile, excess airfield fill, and offsite fill. The bid also provides for the removal and disposal of unsuitable material from the parcels.

Invitation to Bid #543-11355 was opened on February 10, 2014 with ten bids received. The low bidder, JMS Construction Services, Inc., has met all of the specifications of the bid and has been deemed the lowest cost, responsive and responsible bidder with a bid of \$1,278,970.

Staff Recommendation

Staff recommends that the City award the contract for Earthwork Improvements on Parcels B, C, & D to JMS Construction Services, Inc. in the amount of \$1,278,970.

UPDATE ITEM A

DATE: March 21, 2014
TO: Aviation Advisory Board
FROM: Mark J. Cervasio, Acting Airport Manager *MJC*
BY: Florence Straugh, Noise Abatement Officer
SUBJECT: Noise Compatibility Program - Update

Noise Monitoring Terminals

The Airport currently has seven (7) Noise Monitoring Terminals (NMTs). Of which, six (6) are older B&K models and one (1) is a new B&K model 3639-A that was installed in 2012. The City has budgeted to replace four (4) of the aging NMTs.

As background information, Bruel & Kjaer EMS Inc. owns the Airport Noise & Operations Monitoring System (ANOMS) application and their parent company, Bruel & Kjaer, is the owner and manufacturer of the existing noise monitors. Bruel & Kjaer EMS Inc. has informed the City that they only support Bruel & Kjaer brand noise monitors and no longer support software development for other brands of noise monitors, indicating a proprietary purchase.

In the best interest of the City, a public bid was issued to ensure that a public notification was made. The bids are due on March 19, 2014. We expect the purchasing item will be presented to the Board for a vote at the next Board meeting.

Nighttime Jets

There were no jets over 80 dB at night between 10:00 p.m. and 7:00 a.m. from November 2013 through February 2014.

Noise Abatement Cooperative Effort

The data below summarizes the monthly noise and operations statistics for November 2013, December 2013, January 2014 and February 2014:

	Nov-13
Total Jet Departures	1015
Runway 26 Departures	126
Runway 08 Departures	889
Runway 13-31 Departures	0
Total I-95 Turns	532
% I-95 Turns - Rwy 8 Jet Deps	60%
Noise Events at Monitor #1	348
Noise Events at Monitor #2	163
Jet Events over 80 dB at Monitor #1	60
Jet Events over 80 dB at Monitor #2	12
No. of Households Reporting	9
No. of Noise Reports	41

UPDATE ITEM A
PAGE 2 OF 2

	Dec-13
Total Jet Departures	1110
Runway 26 Departures	170
Runway 08 Departures	940
Runway 13-31 Departures	0
Total I-95 Turns	543
% I-95 Turns - Rwy 8 Jet Deps	58%
Noise Events at Monitor #1	375
Noise Events at Monitor #2	204
Jet Events over 80 dB at Monitor #1	64
Jet Events over 80 dB at Monitor #2	17
No. of Households Reporting	25
No. of Noise Reports	108

	Jan-14
Total Jet Departures	979
Runway 26 Departures	475
Runway 08 Departures	504
Runway 13-31 Departures	0
Total I-95 Turns	258
% I-95 Turns - Rwy 8 Jet Deps	51%
Noise Events at Monitor #1	234
Noise Events at Monitor #2	111
Jet Events over 80 dB at Monitor #1	41
Jet Events over 80 dB at Monitor #2	13
No. of Households Reporting	13
No. of Noise Reports	61

	Feb-14
Total Jet Departures	1026
Runway 26 Departures	345
Runway 08 Departures	680
Runway 13-31 Departures	1
Total I-95 Turns	392
% I-95 Turns - Rwy 8 Jet Deps	58%
Noise Events at Monitor #1	311
Noise Events at Monitor #2	151
Jet Events over 80 dB at Monitor #1	56
Jet Events over 80 dB at Monitor #2	15
No. of Households Reporting	22
No. of Noise Reports	58



COOPERATIVE NOISE ABATEMENT EFFORT

Month of November

March 27, 2014

Operations	Nov-12	Dec-12	Jan-13	Feb-13	Mar-13	Apr-13	May-13	Jun-13	Jul-13	Aug-13	Sep-13	Oct-13	Nov-13
Total Jet Departures	919	978	995	918	1035	719	811	744	766	736	622	778	1015
Jet Departures Rwy 26	420	319	121	309	409	79	158	84	127	56	89	97	126
Jet Departures Rwy 8	496	649	874	607	624	640	653	660	639	680	532	681	889
Jet Departures Rwy 13 and 31	3	10	0	2	2	0	0	0	0	0	1	0	0
Jet Departures Rwy 8													
Jet Departures I-95 Turn	294	364	511	372	356	400	406	382	369	359	292	427	532
% Jet Departures I-95 Turn	59%	56%	58%	61%	57%	63%	62%	58%	58%	53%	55%	63%	60%
Jets Over 80 dB at NMT #2	9	5	18	10	10	9	8	15	12	6	14	8	12
Prop Departures Rwy 8													
Prop Over 80 dB NMT #2	11	22	27	20	18	34	28	25	16	32	17	17	20
Nighttime Jet Deps (10 p.m. - 7 a.m.)													
Total Nighttime Jet Departures	79	108	67	91	80	59	52	67	47	60	59	68	95
Nighttime Jet Deps Rwy 26	37	45	0	33	34	11	13	14	9	7	14	9	17
Nighttime Jet Deps Rwy 8	42	62	67	58	46	48	39	53	38	53	45	59	78
Nighttime Jet Deps Rwy 13 and 31	0	1	0	0	0	0	0	0	0	0	0	0	0
Nighttime Jet Deps Runway 8													
Nighttime I-95 Turns 11 p.m. - 7 a.m.	37	51	60	53	36	43	36	44	36	49	41	52	66
Nighttime Straight-Out 10 p.m. - 7 a.m.	5	11	7	5	10	5	3	9	3	0	5	7	0
Nighttime Jets Over 80 dB 10 p.m. -7 a.m.	0	0	0	0	0	0	1	1	0	0	0	0	0
Noise Reports													
Noise Reports by Aircraft Category at FXE													
# Noise Reports on Jets	16	11	16	20	15	10	2	3	4	4	6	6	11
# Noise Reports on Propellers	18	43	18	20	22	21	13	1	4	1	6	5	14
# Noise Reports on Helicopters	4	12	4	20	9	8	7	10	5	6	2	15	15
# Noise Reports - unmatched	1	1	1	0	0	1	0	0	0	0	1	1	1
# Noise Reports - FLL & Other													
Airports' Overflights	1	1	6	6	0	3	0	0	1	0	4	6	0
Total Noise Reports	40	68	45	66	46	43	22	14	14	11	19	33	41
# of Households Reporting	16	12	25	18	20	17	10	7	10	6	8	10	9

Notes:

Noise Monitor Terminal #2 (NMT #2) - noise levels in decibels (Lmax) recorded at NMT #2
 On April 2 & 3, 2013, FLL radar was relocated and unavailable for flight tracks.



COOPERATIVE NOISE ABATEMENT EFFORT

Month of November

March 27, 2014

Monthly Operations over 80dB Per Aircraft Type

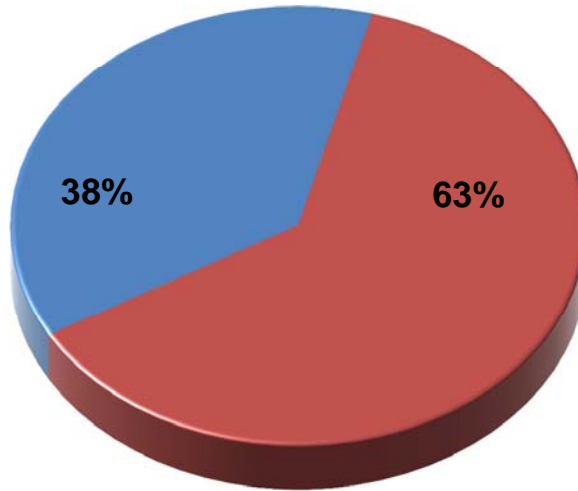
Total Percentage of Departures Over 80 dB: 0.8%

12
Out of
1015

1% of Jets Departures were over 80 dB.

20
Out of
3098

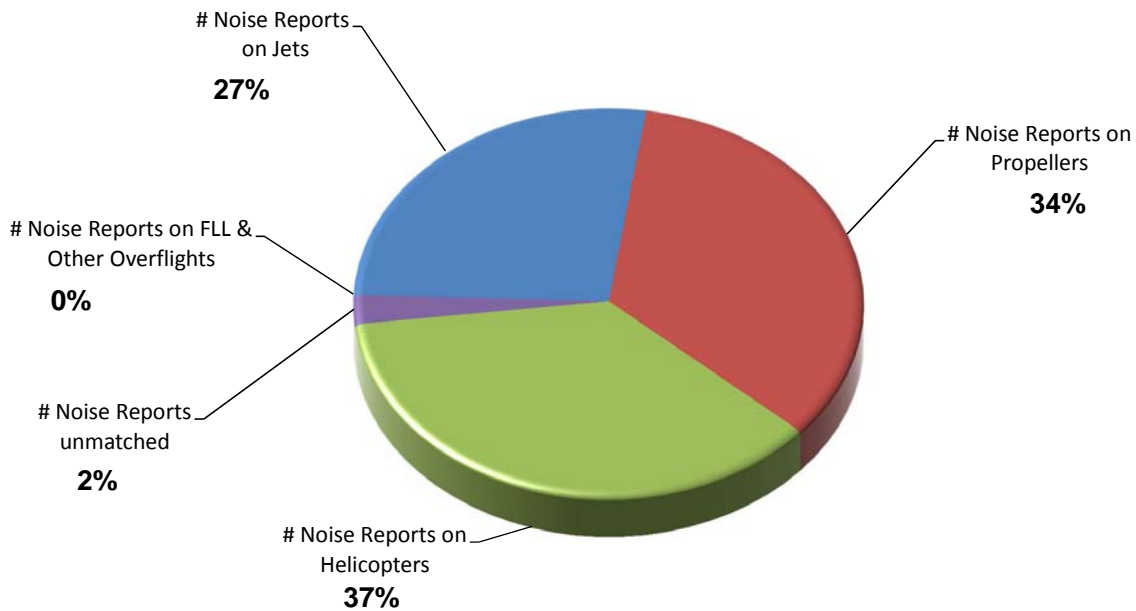
0.6% of Propeller Departures were over 80 dB.



■ % Aircraft over 80 dB - Jets

■ % Aircraft over 80 dB - Props

Monthly Noise Reports Per Aircraft Type





COOPERATIVE NOISE ABATEMENT EFFORT

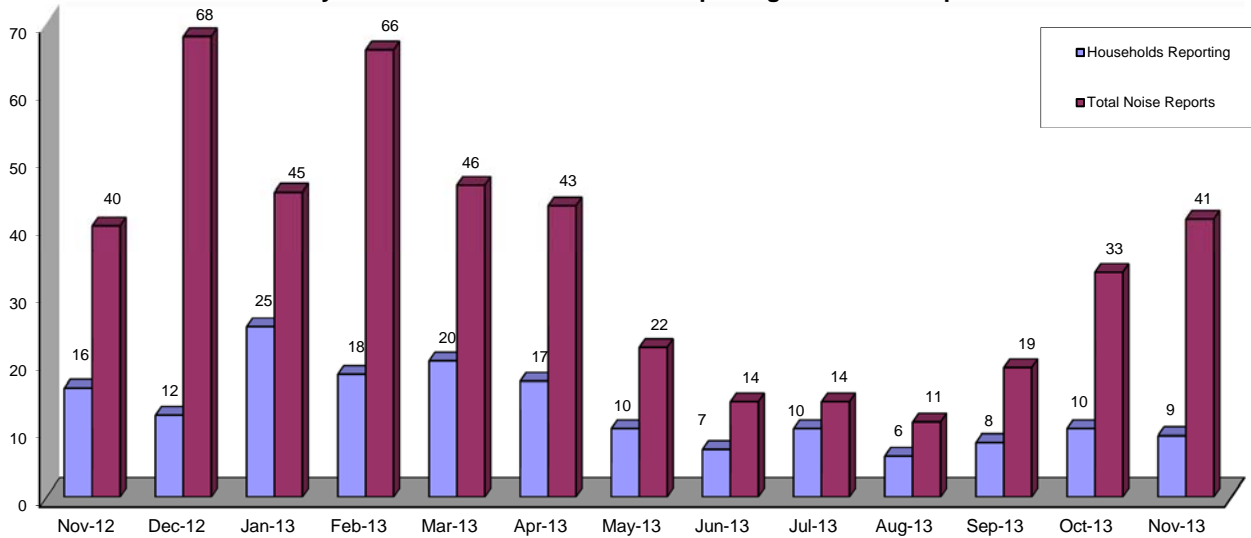
Month of November

March 27, 2014

Number of total households contacting FXE to report aircraft noise:

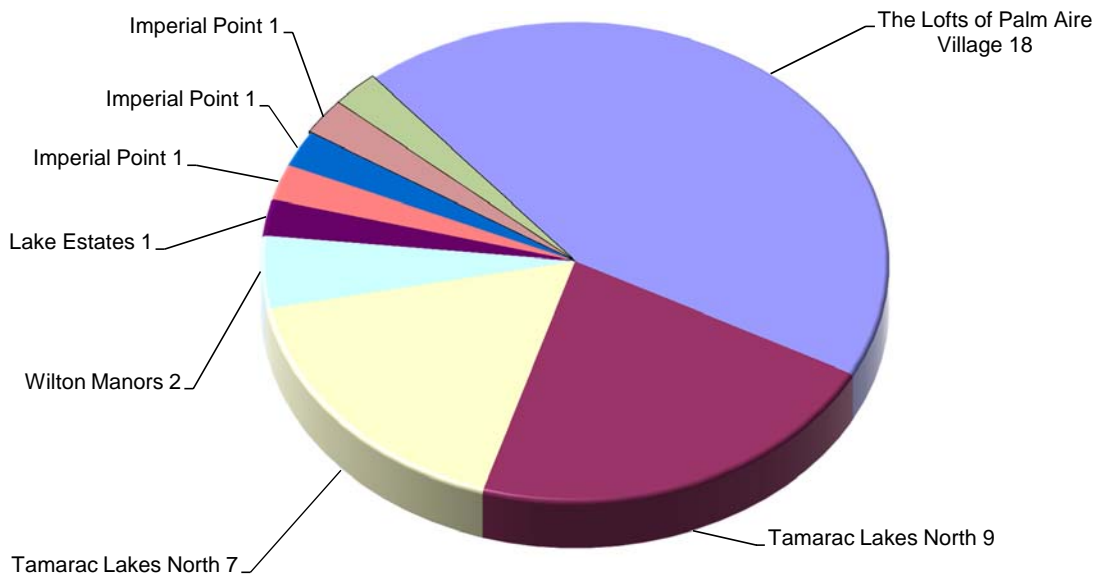
9

Monthly Total Number of Households Reporting and Noise Reports



Report Distribution by Household

9 Households made 41 aircraft noise reports or 100% of the 41 total noise reports





COOPERATIVE NOISE ABATEMENT EFFORT

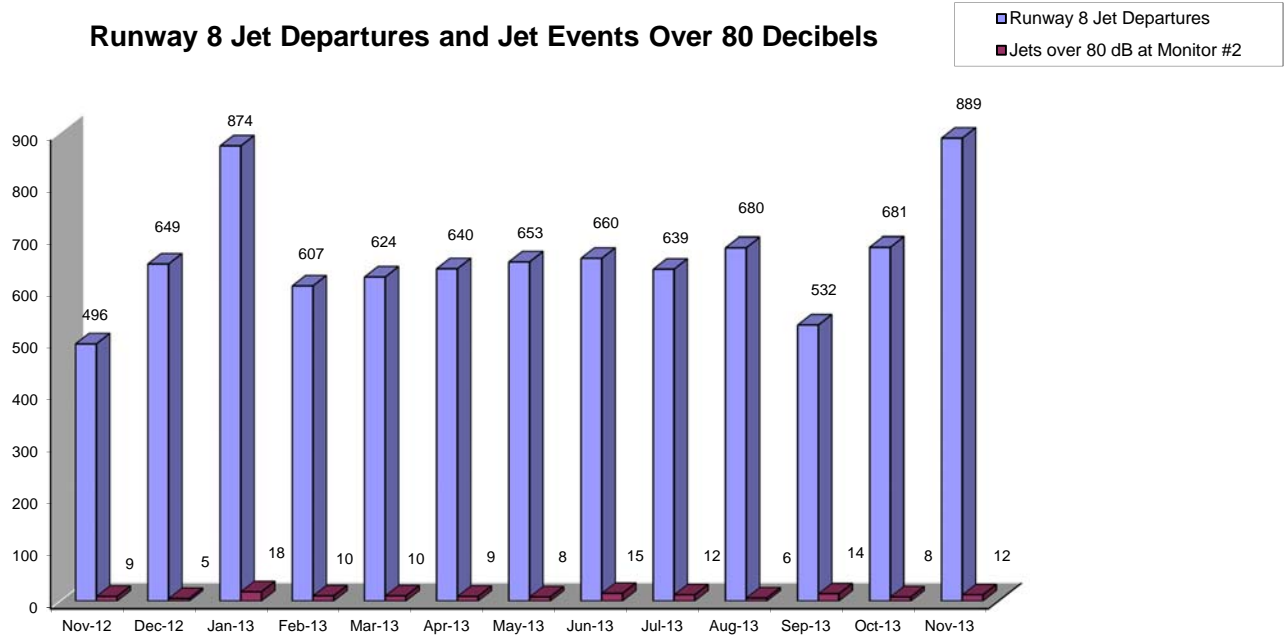
Month of November

March 27, 2014

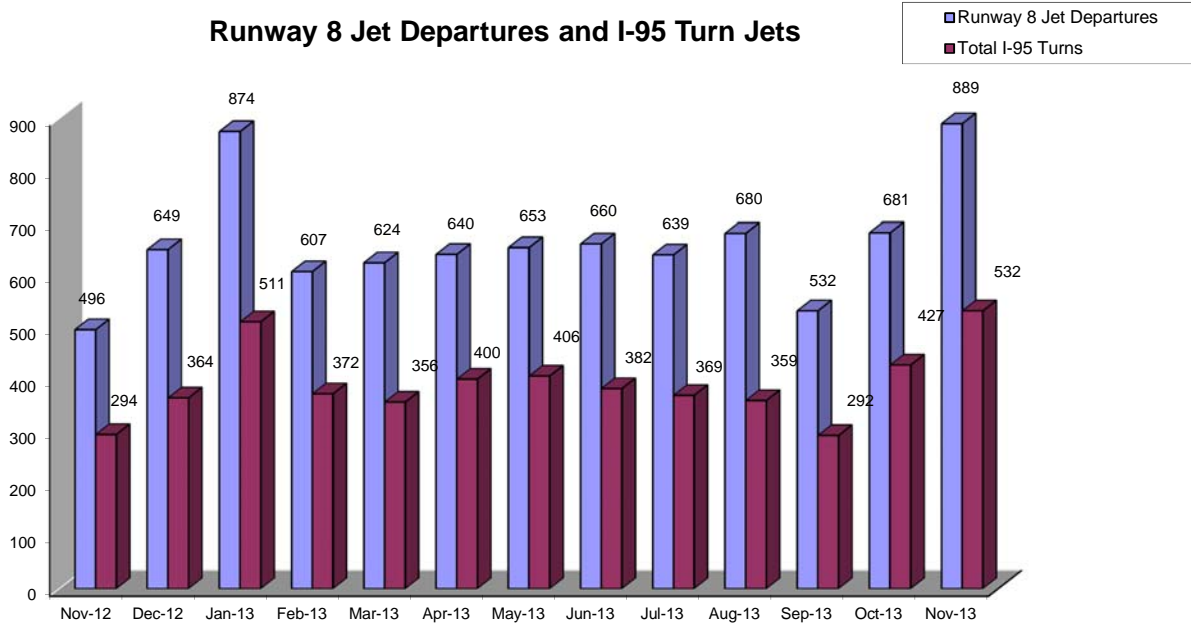
Number of Runway 8 Jet Departures over 80 decibels:

12

Runway 8 Jet Departures and Jet Events Over 80 Decibels



Runway 8 Jet Departures and I-95 Turn Jets



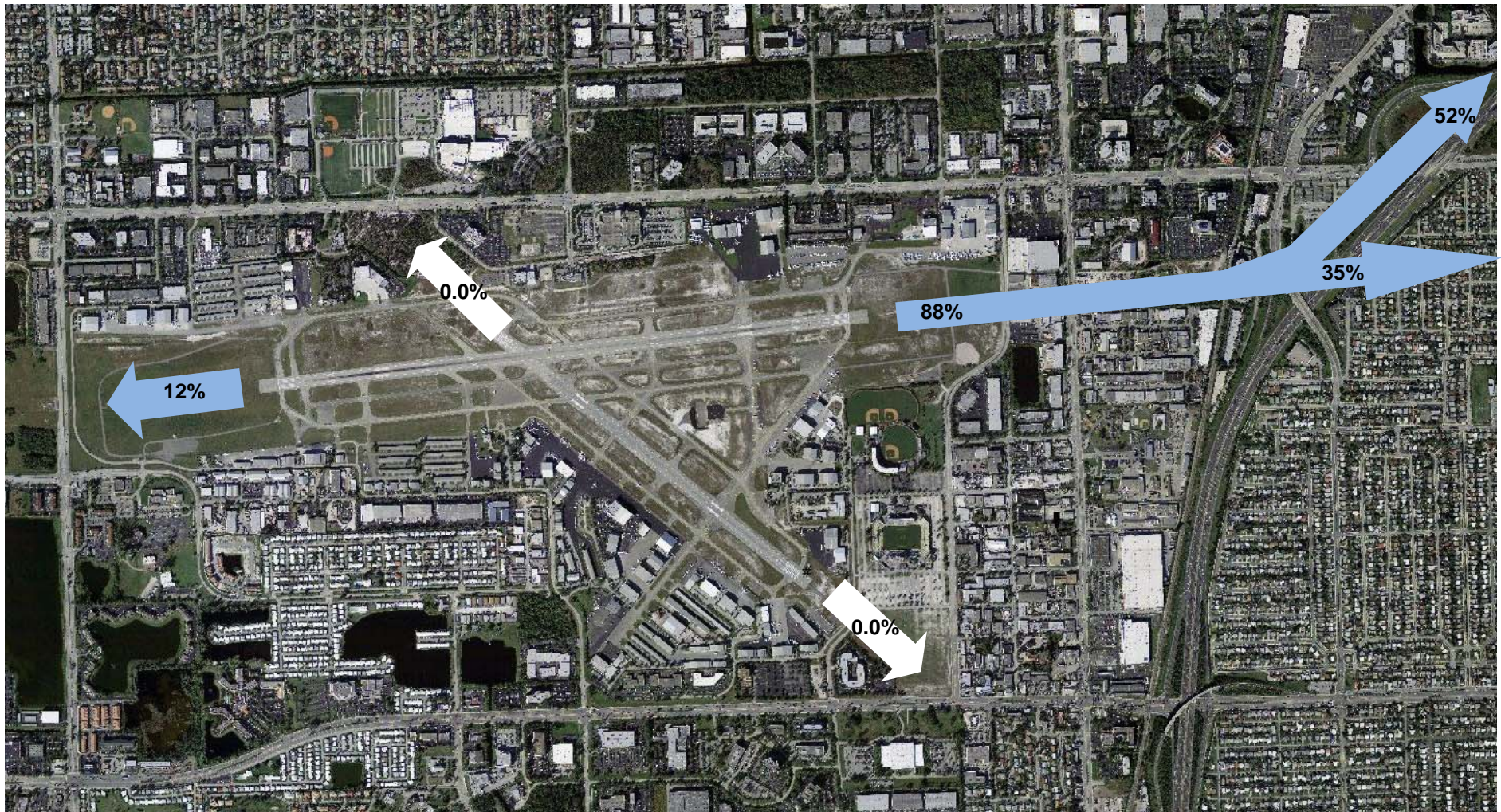


COOPERATIVE NOISE ABATEMENT EFFORT

Month of November

March 27, 2014

Percentage of Jet Departures Per Runway



As of November 2011 Noise Tables, the percentages for Runway 8 Jet Departures for the I-95 Turn and for Straight-out flights, have been changed. The old percentages for jets that made the I-95 Turn and for the jets that went straight-out were based on 100% of Runway 8 Jet Departures . The new percentages for jets that make the I-95 Turn and for jets that fly straightout will be based on 100% of all jet departures.



COOPERATIVE NOISE ABATEMENT EFFORT

Month of December

March 27, 2014

Operations	Dec-12	Jan-13	Feb-13	Mar-13	Apr-13	May-13	Jun-13	Jul-13	Aug-13	Sep-13	Oct-13	Nov-13	Dec-13
Total Jet Departures	978	995	918	1035	719	811	744	766	736	622	778	1015	1110
Jet Departures Rwy 26	319	121	309	409	79	158	84	127	56	89	97	126	170
Jet Departures Rwy 8	649	874	607	624	640	653	660	639	680	532	681	889	940
Jet Departures Rwy 13 and 31	10	0	2	2	0	0	0	0	0	1	0	0	0
Jet Departures Rwy 8													
Jet Departures I-95 Turn	364	511	372	356	400	406	382	369	359	292	427	532	543
% Jet Departures I-95 Turn	56%	58%	61%	57%	63%	62%	58%	58%	53%	55%	63%	60%	58%
Jets Over 80 dB at NMT #2	5	18	10	10	9	8	15	12	6	14	8	12	17
Prop Departures Rwy 8													
Prop Over 80 dB NMT #2	22	27	20	18	34	28	25	16	32	17	17	20	43
Nighttime Jet Deps (10 p.m. - 7 a.m.)													
Total Nighttime Jet Departures	108	67	91	80	59	52	67	47	60	59	68	95	112
Nighttime Jet Deps Rwy 26	45	0	33	34	11	13	14	9	7	14	9	17	16
Nighttime Jet Deps Rwy 8	62	67	58	46	48	39	53	38	53	45	59	78	96
Nighttime Jet Deps Rwy 13 and 31	1	0	0	0	0	0	0	0	0	0	0	0	0
Nighttime Jet Deps Runway 8													
Nighttime I-95 Turns 11 p.m. - 7 a.m.	51	60	53	36	43	36	44	36	49	41	52	66	77
Nighttime Straight-Out 10 p.m. - 7 a.m.	11	7	5	10	5	3	9	3	0	5	7	0	18
Nighttime Jets Over 80 dB 10 p.m. -7 a.m.	0	0	0	0	0	1	1	0	0	0	0	0	0
Noise Reports													
Noise Reports by Aircraft Category at FXE													
# Noise Reports on Jets	11	16	20	15	10	2	3	4	4	6	6	11	25
# Noise Reports on Propellers	43	18	20	22	21	13	1	4	1	6	5	14	51
# Noise Reports on Helicopters	12	4	20	9	8	7	10	5	6	2	15	15	24
# Noise Reports - unmatched	1	1	0	0	1	0	0	0	0	1	1	1	3
# Noise Reports - FLL & Other													
Airports' Overflights	1	6	6	0	3	0	0	1	0	4	6	0	5
Total Noise Reports	68	45	66	46	43	22	14	14	11	19	33	41	108
# of Households Reporting	12	25	18	20	17	10	7	10	6	8	10	9	25

Notes:

Noise Monitor Terminal #2 (NMT #2) - noise levels in decibels (Lmax) recorded at NMT #2

On April 2 & 3, 2013, FLL radar was relocated and unavailable for flight tracks.



COOPERATIVE NOISE ABATEMENT EFFORT

Month of December

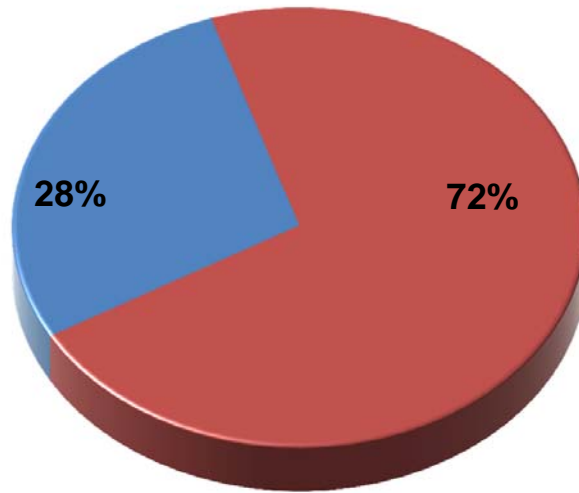
March 27, 2014

Monthly Operations over 80dB Per Aircraft Type

Total Percentage of Departures Over 80 dB: 1.3%

17
Out of
1110

2% of Jets Departures were over 80 dB.



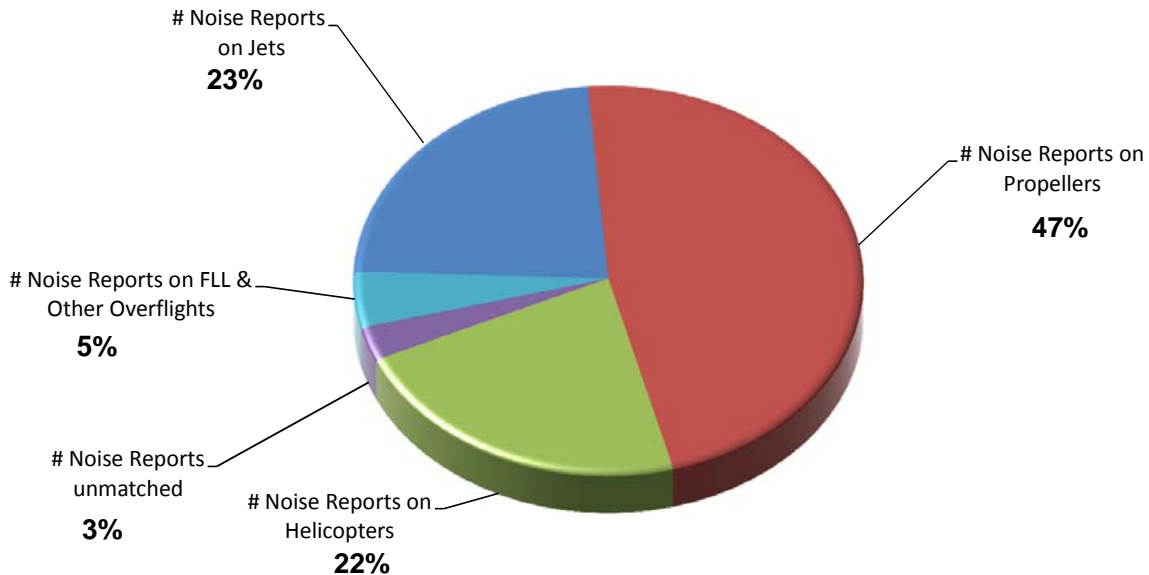
43
Out of
3354

1.3% of Propeller Departures were over 80 dB.

■ % Aircraft over 80 dB - Jets

■ % Aircraft over 80 dB - Props

Monthly Noise Reports Per Aircraft Type





COOPERATIVE NOISE ABATEMENT EFFORT

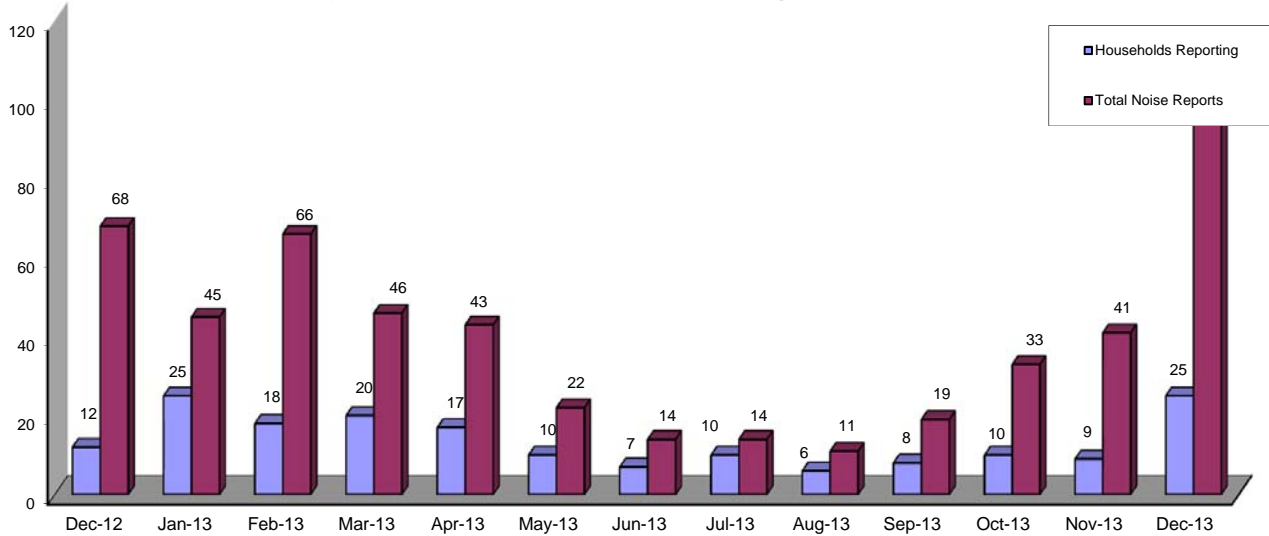
Month of December

March 27, 2014

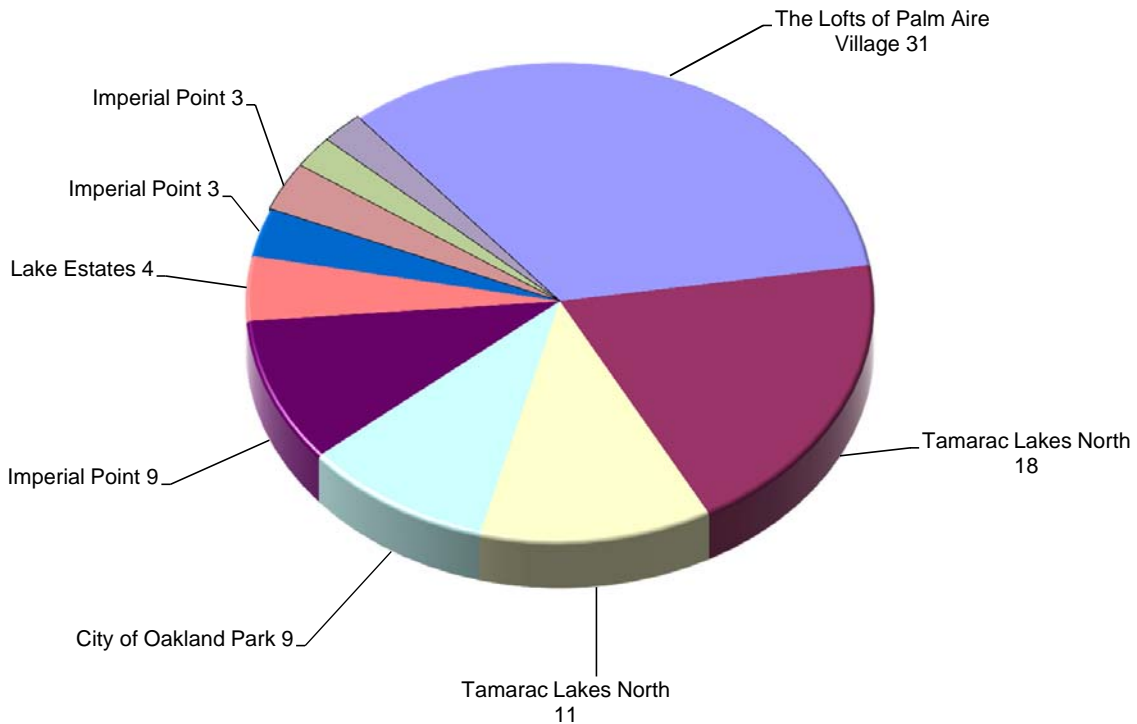
Number of total households contacting FXE to report aircraft noise:

25

Monthly Total Number of Households Reporting and Noise Reports



Report Distribution by Household
 10 Households made 92 aircraft noise reports or 85% of the 108 total noise reports





COOPERATIVE NOISE ABATEMENT EFFORT

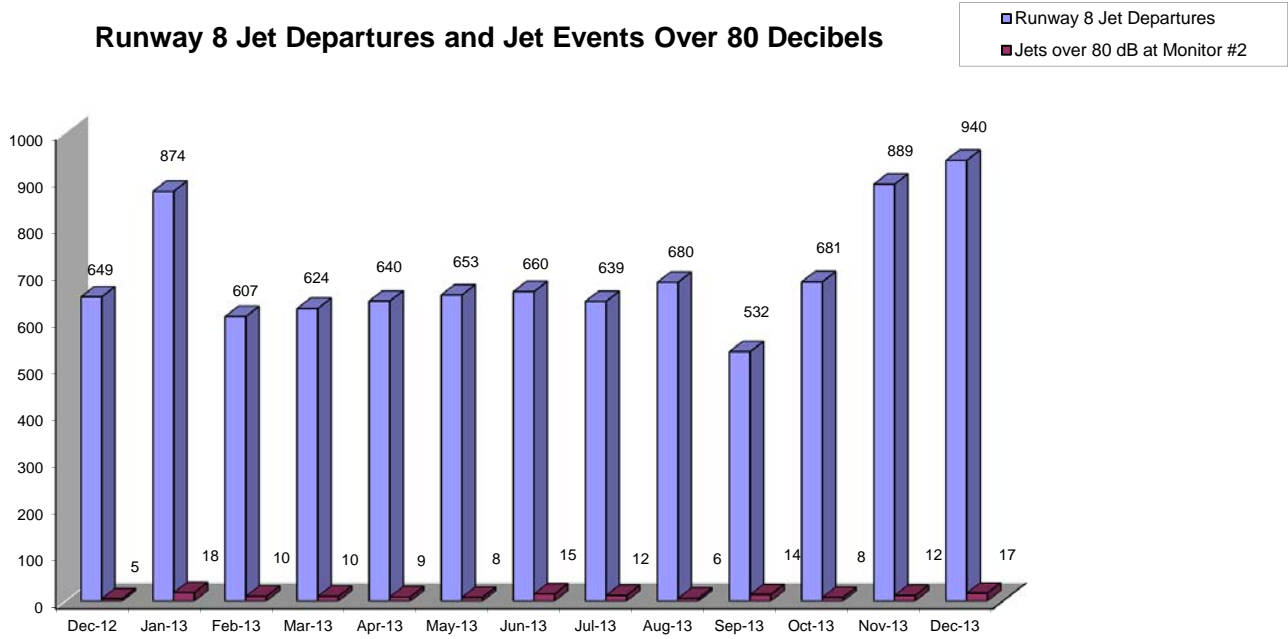
Month of December

March 27, 2014

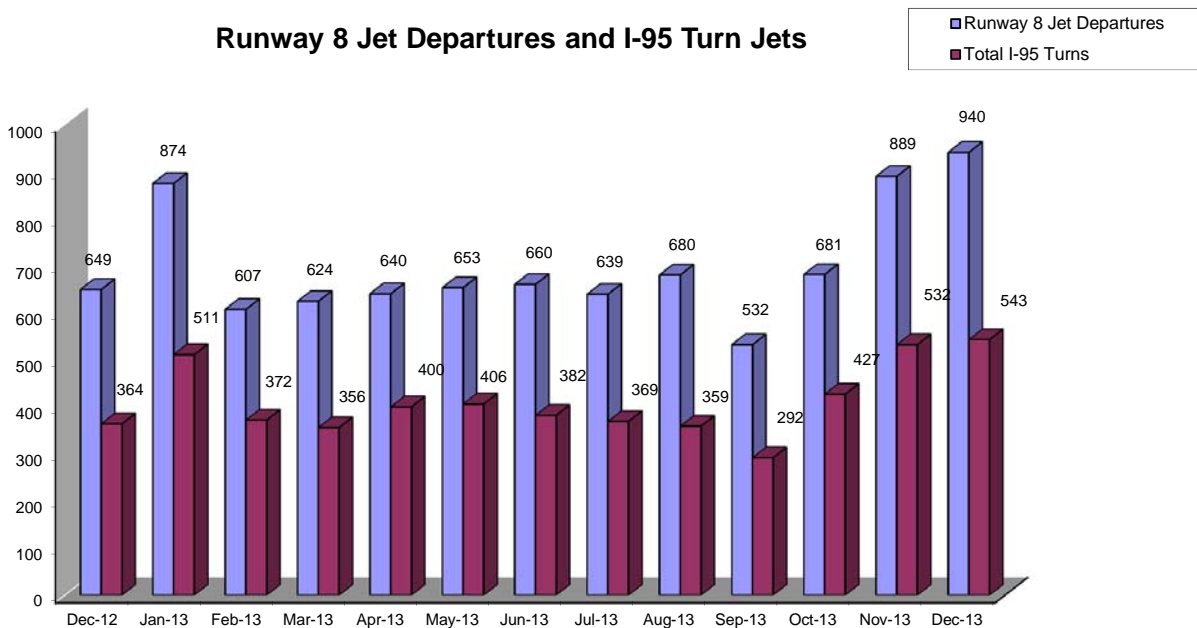
Number of Runway 8 Jet Departures over 80 decibels:

17

Runway 8 Jet Departures and Jet Events Over 80 Decibels



Runway 8 Jet Departures and I-95 Turn Jets



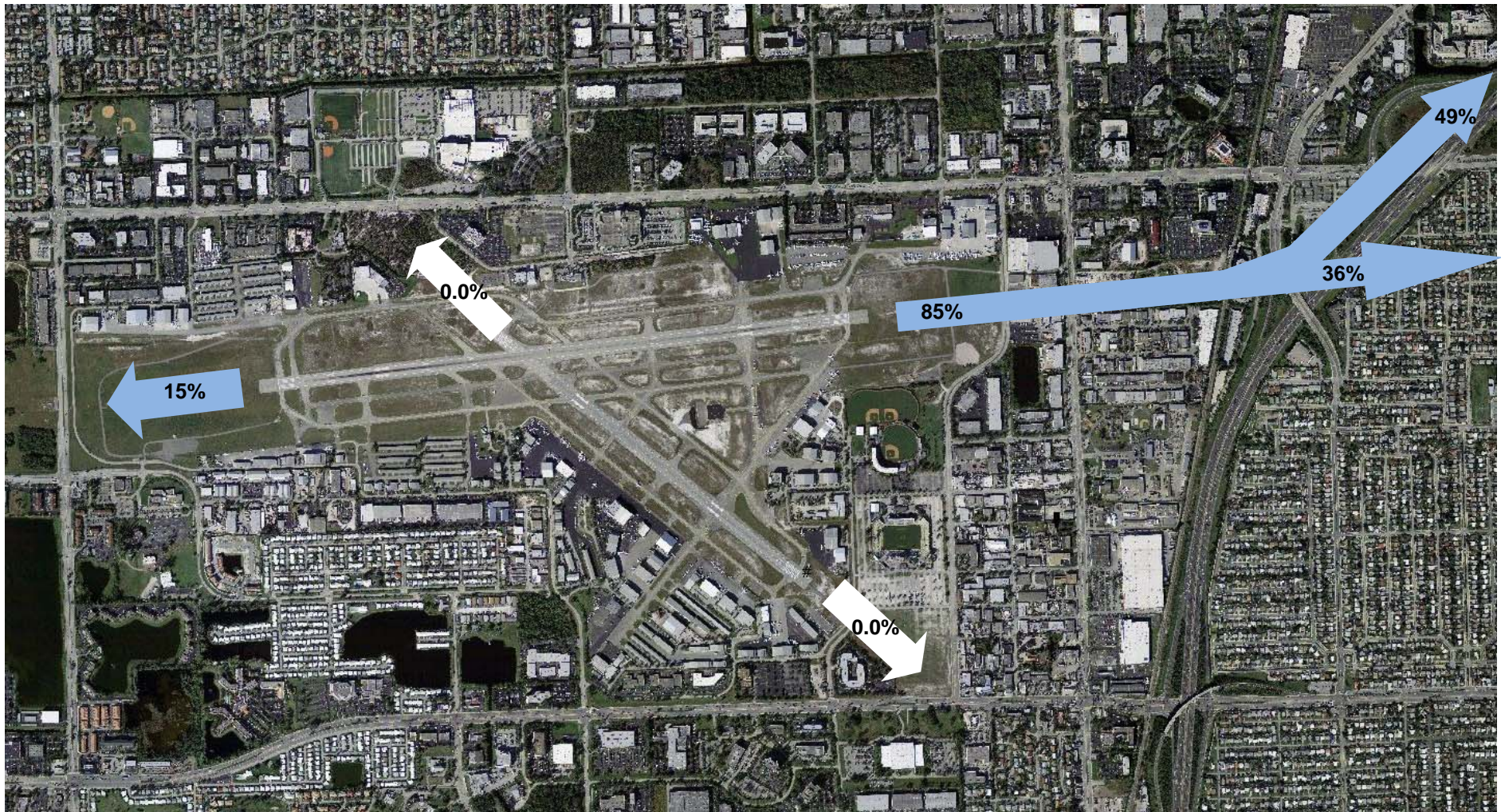


COOPERATIVE NOISE ABATEMENT EFFORT

Month of December

March 27, 2014

Percentage of Jet Departures Per Runway



As of November 2011 Noise Tables, the percentages for Runway 8 Jet Departures for the I-95 Turn and for Straight-out flights, have been changed. The old percentages for jets that made the I-95 Turn and for the jets that went straight-out were based on 100% of Runway 8 Jet Departures . The new percentages for jets that make the I-95 Turn and for jets that fly straightout will be based on 100% of all jet departures.



COOPERATIVE NOISE ABATEMENT EFFORT

Month of January

March 27, 2014

Operations	Jan-13	Feb-13	Mar-13	Apr-13	May-13	Jun-13	Jul-13	Aug-13	Sep-13	Oct-13	Nov-13	Dec-13	Jan-14
Total Jet Departures	995	918	1035	719	811	744	766	736	622	778	1015	1110	979
Jet Departures Rwy 26	121	309	409	79	158	84	127	56	89	97	126	170	475
Jet Departures Rwy 8	874	607	624	640	653	660	639	680	532	681	889	940	504
Jet Departures Rwy 13 and 31	0	2	2	0	0	0	0	0	1	0	0	0	0
Jet Departures Rwy 8													
Jet Departures I-95 Turn	511	372	356	400	406	382	369	359	292	427	532	543	258
% Jet Departures I-95 Turn	58%	61%	57%	63%	62%	58%	58%	53%	55%	63%	60%	58%	51%
Jets Over 80 dB at NMT #2	18	10	10	9	8	15	12	6	14	8	12	17	13
Prop Departures Rwy 8													
Prop Over 80 dB NMT #2	27	20	18	34	28	25	16	32	17	17	20	43	16
Nighttime Jet Deps (10 p.m. - 7 a.m.)													
Total Nighttime Jet Departures	67	91	80	59	52	67	47	60	59	68	95	112	94
Nighttime Jet Deps Rwy 26	0	33	34	11	13	14	9	7	14	9	17	16	53
Nighttime Jet Deps Rwy 8	67	58	46	48	39	53	38	53	45	59	78	96	41
Nighttime Jet Deps Rwy 13 and 31	0	0	0	0	0	0	0	0	0	0	0	0	0
Nighttime Jet Deps Runway 8													
Nighttime I-95 Turns 11 p.m. - 7 a.m.	60	53	36	43	36	44	36	49	41	52	66	77	33
Nighttime Straight-Out 10 p.m. - 7 a.m.	7	5	10	5	3	9	3	0	5	7	0	18	8
Nighttime Jets Over 80 dB 10 p.m. -7 a.m.	0	0	0	0	1	1	0	0	0	0	0	0	0
Noise Reports	Jan-13	Feb-13	Mar-13	Apr-13	May-13	Jun-13	Jul-13	Aug-13	Sep-13	Oct-13	Nov-13	Dec-13	Jan-14
Noise Reports by Aircraft Category at FXE													
# Noise Reports on Jets	16	20	15	10	2	3	4	4	6	6	11	25	17
# Noise Reports on Propellers	18	20	22	21	13	1	4	1	6	5	14	51	26
# Noise Reports on Helicopters	4	20	9	8	7	10	5	6	2	15	15	24	17
# Noise Reports - unmatched	1	0	0	1	0	0	0	0	1	1	1	3	0
# Noise Reports - FLL & Other													
Airports' Overflights	6	6	0	3	0	0	1	0	4	6	0	5	1
Total Noise Reports	45	66	46	43	22	14	14	11	19	33	41	108	61
# of Households Reporting	25	18	20	17	10	7	10	6	8	10	9	25	13

Notes:

Noise Monitor Terminal #2 (NMT #2) - noise levels in decibels (Lmax) recorded at NMT #2

On April 2 & 3, 2013, FLL radar was relocated and unavailable for flight tracks.



COOPERATIVE NOISE ABATEMENT EFFORT

Month of January

March 27, 2014

Monthly Operations over 80dB Per Aircraft Type

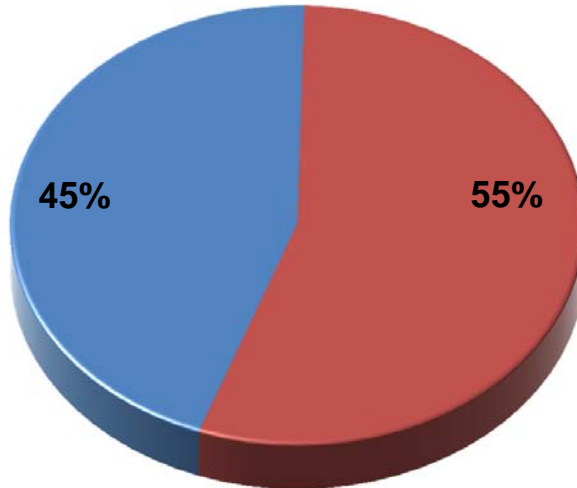
Total Percentage of Departures Over 80 dB: 0.6%

13
Out of
979

1% of Jets Departures were over 80 dB.

16
Out of
3863

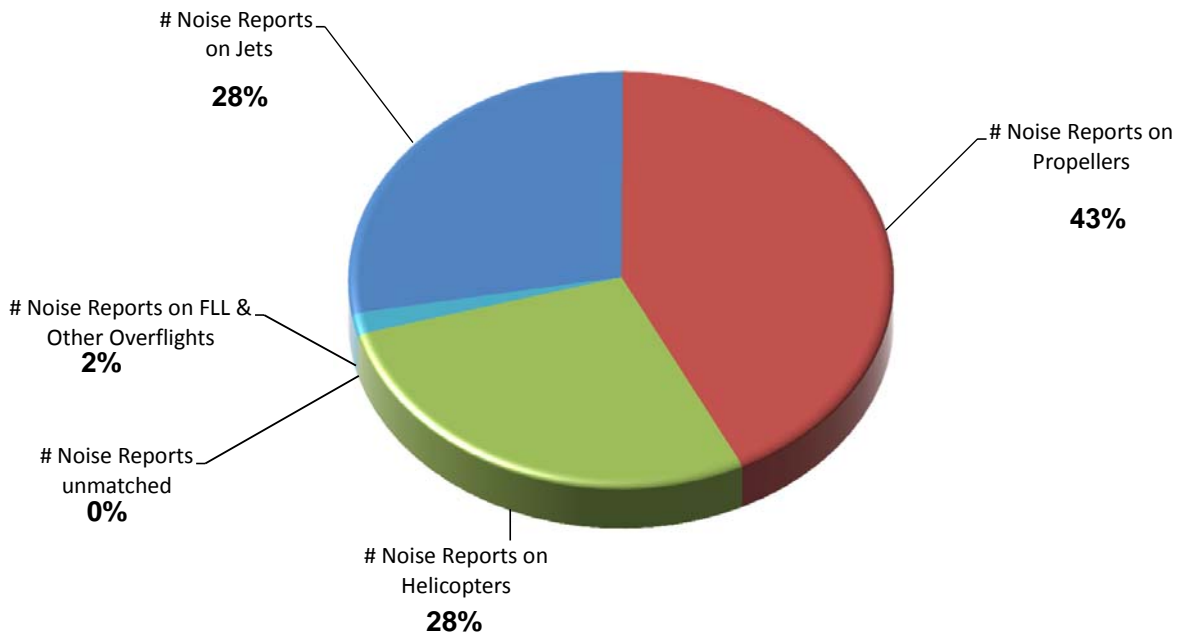
0.4% of Propeller Departures were over 80 dB.



■ % Aircraft over 80 dB - Jets

■ % Aircraft over 80 dB - Props

Monthly Noise Reports Per Aircraft Type





COOPERATIVE NOISE ABATEMENT EFFORT

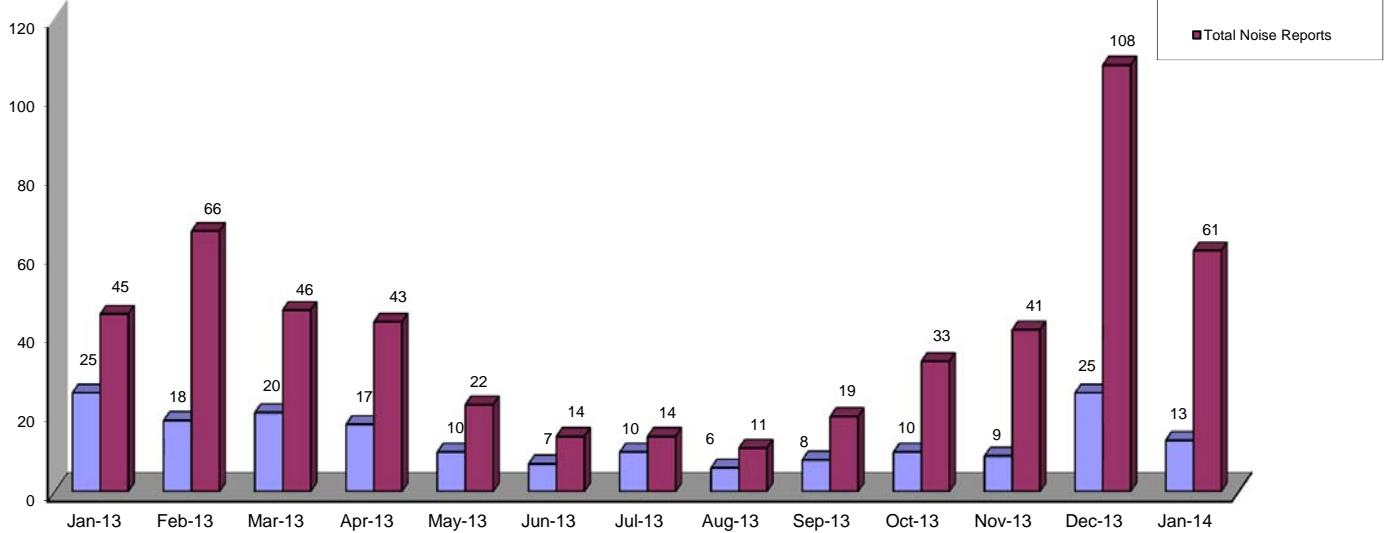
Month of January

March 27, 2014

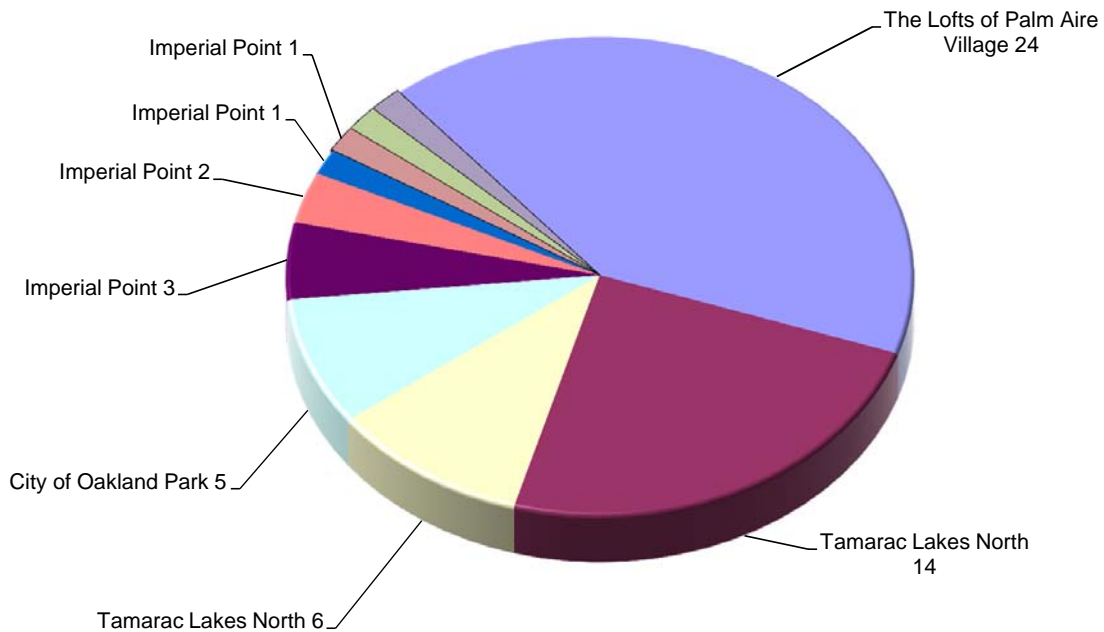
Number of total households contacting FXE to report aircraft noise:

13

Monthly Total Number of Households Reporting and Noise Reports



Report Distribution by Household
 10 Households made 58 aircraft noise reports or 95% of the 61 total noise reports





COOPERATIVE NOISE ABATEMENT EFFORT

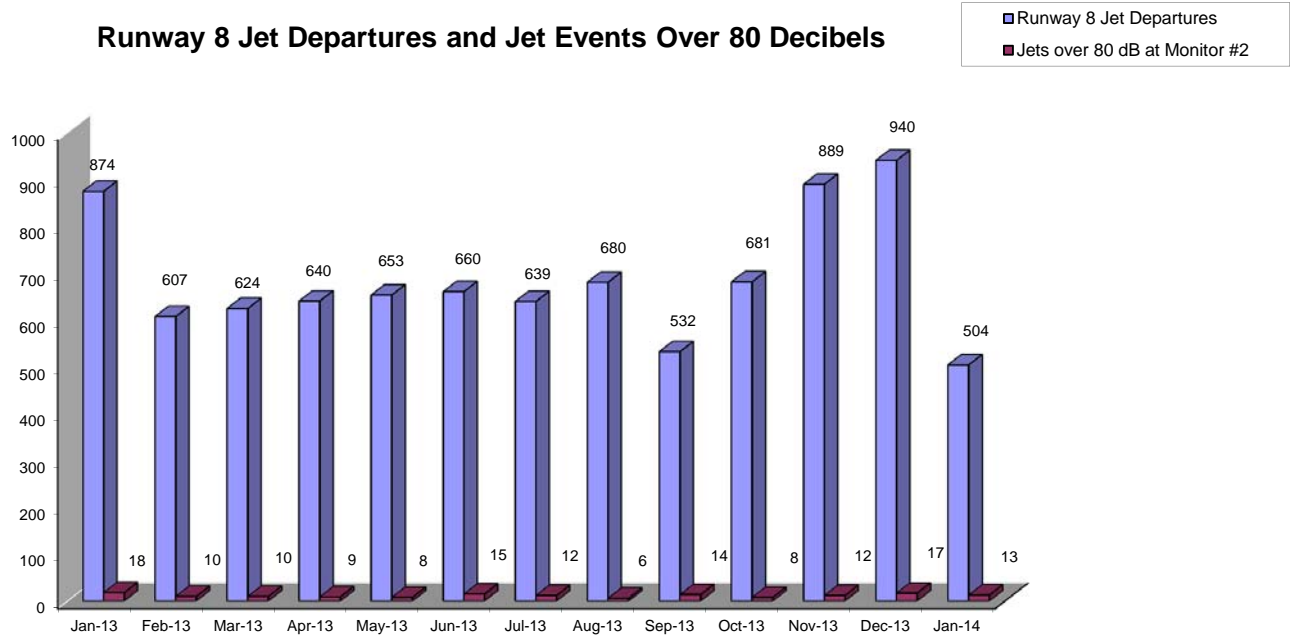
Month of January

March 27, 2014

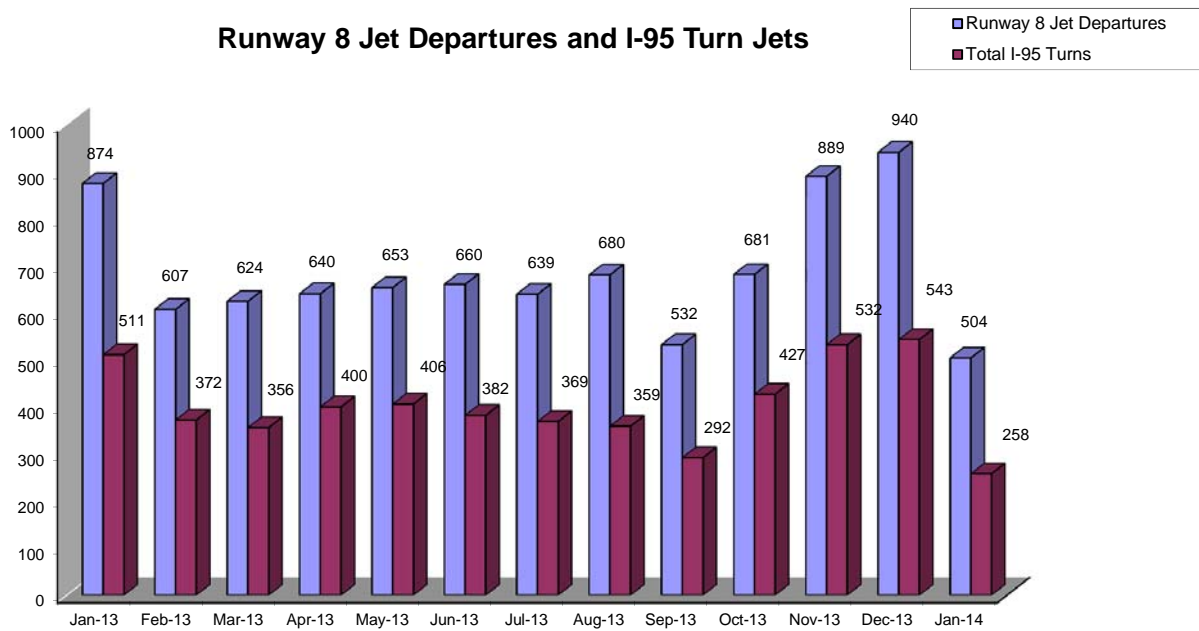
Number of Runway 8 Jet Departures over 80 decibels:

13

Runway 8 Jet Departures and Jet Events Over 80 Decibels



Runway 8 Jet Departures and I-95 Turn Jets



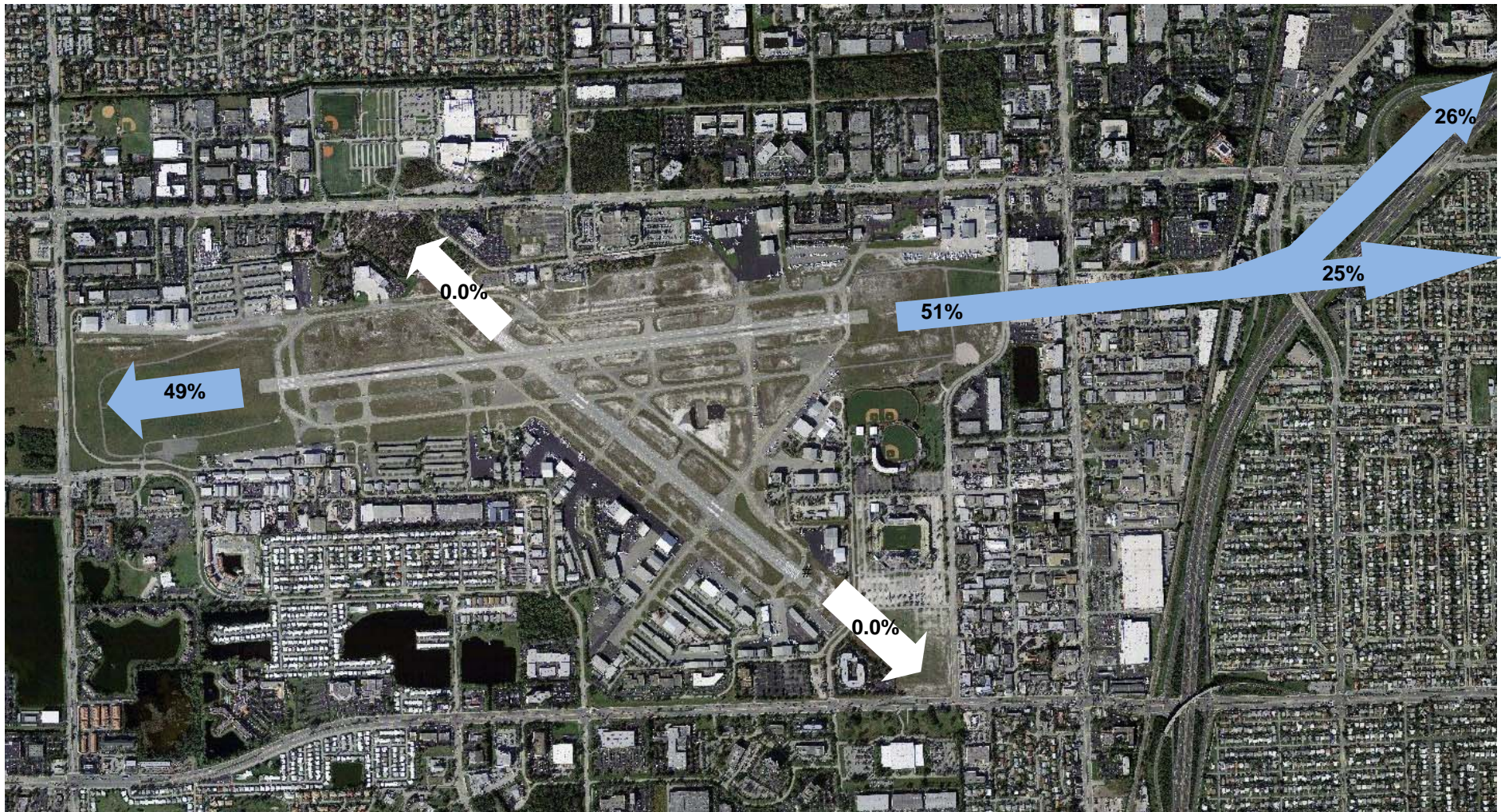


COOPERATIVE NOISE ABATEMENT EFFORT

Month of January

March 27, 2014

Percentage of Jet Departures Per Runway



As of November 2011 Noise Tables, the percentages for Runway 8 Jet Departures for the I-95 Turn and for Straight-out flights, have been changed. The old percentages for jets that made the I-95 Turn and for the jets that went straight-out were based on 100% of Runway 8 Jet Departures . The new percentages for jets that make the I-95 Turn and for jets that fly straightout will be based on 100% of all jet departures.



COOPERATIVE NOISE ABATEMENT EFFORT

Month of February

March 27, 2014

Operations	Feb-13	Mar-13	Apr-13	May-13	Jun-13	Jul-13	Aug-13	Sep-13	Oct-13	Nov-13	Dec-13	Jan-14	Feb-14
Total Jet Departures	918	1035	719	811	744	766	736	622	778	1015	1110	979	1026
Jet Departures Rwy 26	309	409	79	158	84	127	56	89	97	126	170	475	345
Jet Departures Rwy 8	607	624	640	653	660	639	680	532	681	889	940	504	680
Jet Departures Rwy 13 and 31	2	2	0	0	0	0	0	1	0	0	0	0	1
Jet Departures Rwy 8													
Jet Departures I-95 Turn	372	356	400	406	382	369	359	292	427	532	543	258	392
% Jet Departures I-95 Turn	61%	57%	63%	62%	58%	58%	53%	55%	63%	60%	58%	51%	58%
Jets Over 80 dB at NMT #2	10	10	9	8	15	12	6	14	8	12	17	13	15
Prop Departures Rwy 8													
Prop Over 80 dB NMT #2	20	18	34	28	25	16	32	17	17	20	43	16	28
Nighttime Jet Deps (10 p.m. - 7 a.m.)													
Total Nighttime Jet Departures	91	80	59	52	67	47	60	59	68	95	112	94	100
Nighttime Jet Deps Rwy 26	33	34	11	13	14	9	7	14	9	17	16	53	41
Nighttime Jet Deps Rwy 8	58	46	48	39	53	38	53	45	59	78	96	41	59
Nighttime Jet Deps Rwy 13 and 31	0	0	0	0	0	0	0	0	0	0	0	0	0
Nighttime Jet Deps Runway 8													
Nighttime I-95 Turns 11 p.m. - 7 a.m.	53	36	43	36	44	36	49	41	52	66	77	33	54
Nighttime Straight-Out 10 p.m. - 7 a.m.	5	10	5	3	9	3	0	5	7	0	18	8	5
Nighttime Jets Over 80 dB 10 p.m. -7 a.m.	0	0	0	1	1	0	0	0	0	0	0	0	0
Noise Reports													
Noise Reports by Aircraft Category at FXE													
# Noise Reports on Jets	20	15	10	2	3	4	4	6	6	11	25	17	20
# Noise Reports on Propellers	20	22	21	13	1	4	1	6	5	14	51	26	25
# Noise Reports on Helicopters	20	9	8	7	10	5	6	2	15	15	24	17	12
# Noise Reports - unmatched	0	0	1	0	0	0	0	1	1	1	3	0	0
# Noise Reports - FLL & Other													
Airports' Overflights	6	0	3	0	0	1	0	4	6	0	5	1	1
Total Noise Reports	66	46	43	22	14	14	11	19	33	41	108	61	58
# of Households Reporting	18	20	17	10	7	10	6	8	10	9	25	13	22

Notes:

Noise Monitor Terminal #2 (NMT #2) - noise levels in decibels (Lmax) recorded at NMT #2

On April 2 & 3, 2013, FLL radar was relocated and unavailable for flight tracks.



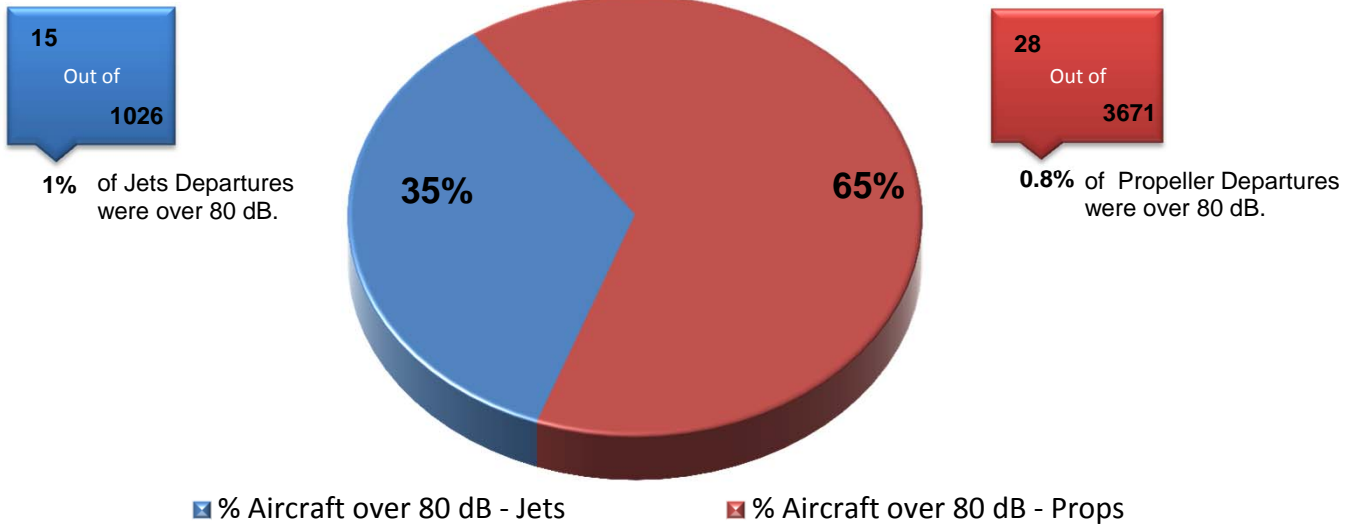
COOPERATIVE NOISE ABATEMENT EFFORT

Month of February

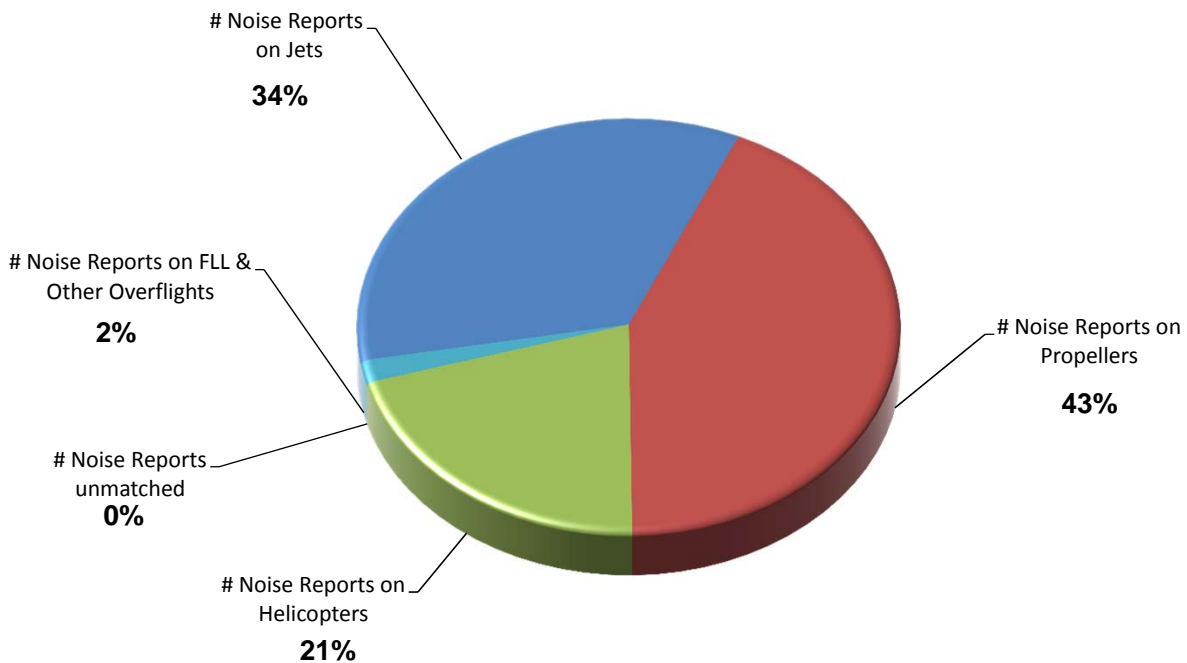
March 27, 2014

Monthly Operations over 80dB Per Aircraft Type

Total Percentage of Departures Over 80 dB: 0.9%



Monthly Noise Reports Per Aircraft Type





COOPERATIVE NOISE ABATEMENT EFFORT

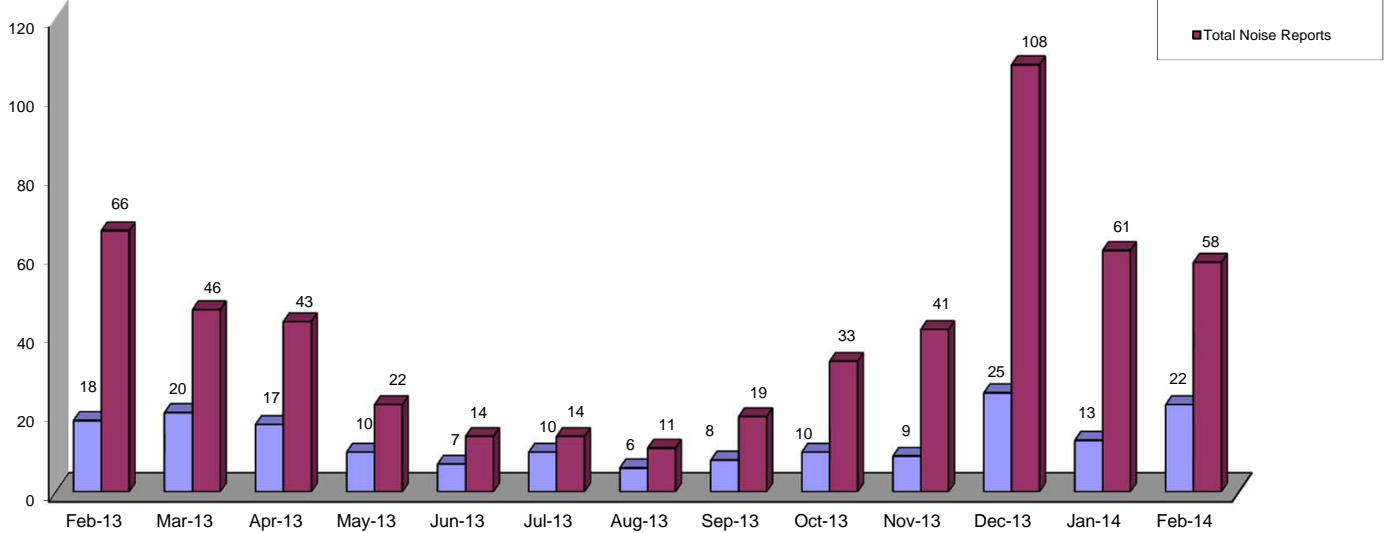
Month of February

March 27, 2014

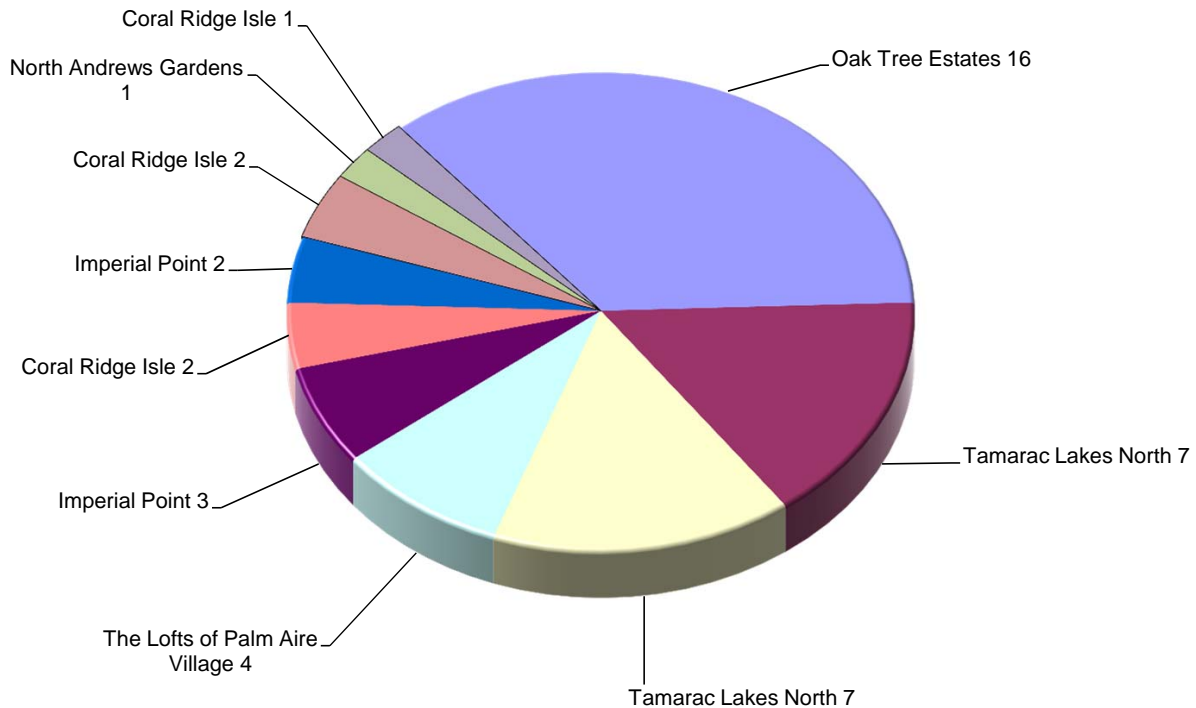
Number of total households contacting FXE to report aircraft noise:

22

Monthly Total Number of Households Reporting and Noise Reports



Report Distribution by Household
 10 Households made 45 aircraft noise reports or 78% of the 58 total noise reports





COOPERATIVE NOISE ABATEMENT EFFORT

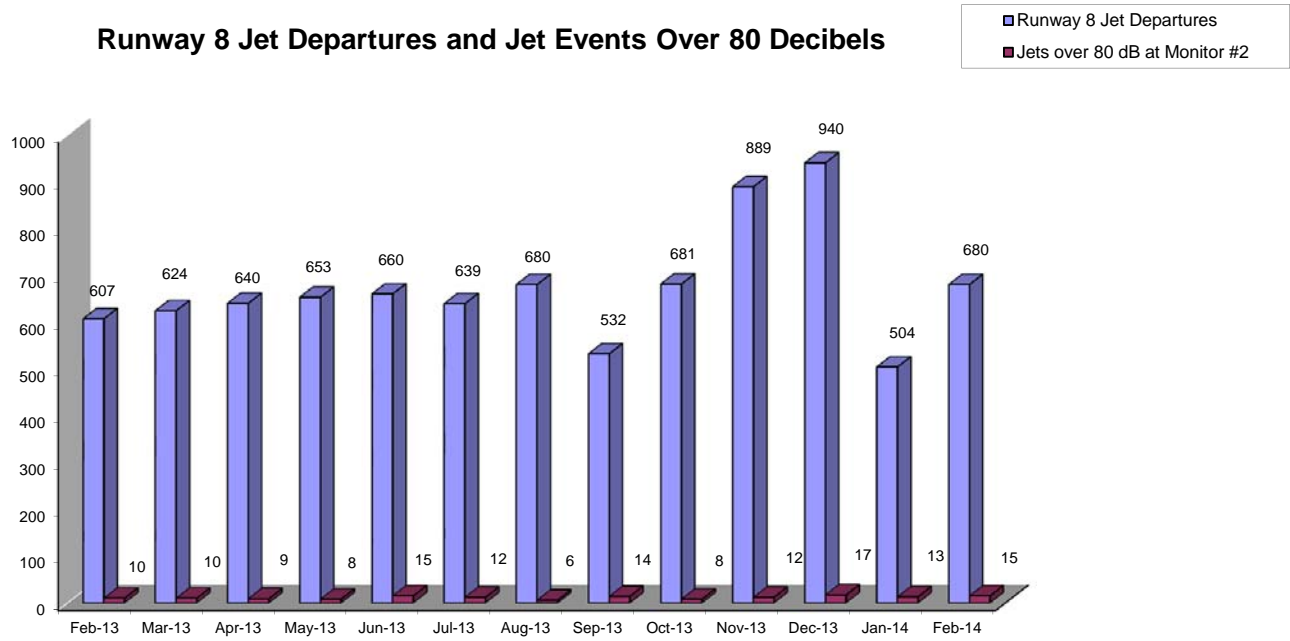
Month of February

March 27, 2014

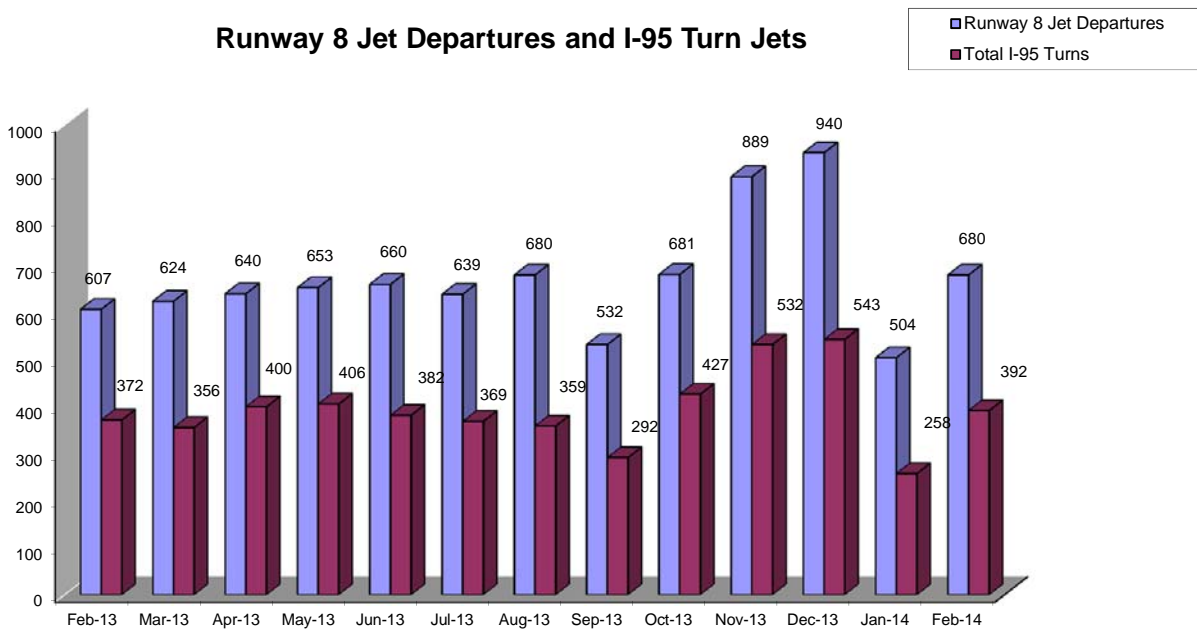
Number of Runway 8 Jet Departures over 80 decibels:

15

Runway 8 Jet Departures and Jet Events Over 80 Decibels



Runway 8 Jet Departures and I-95 Turn Jets



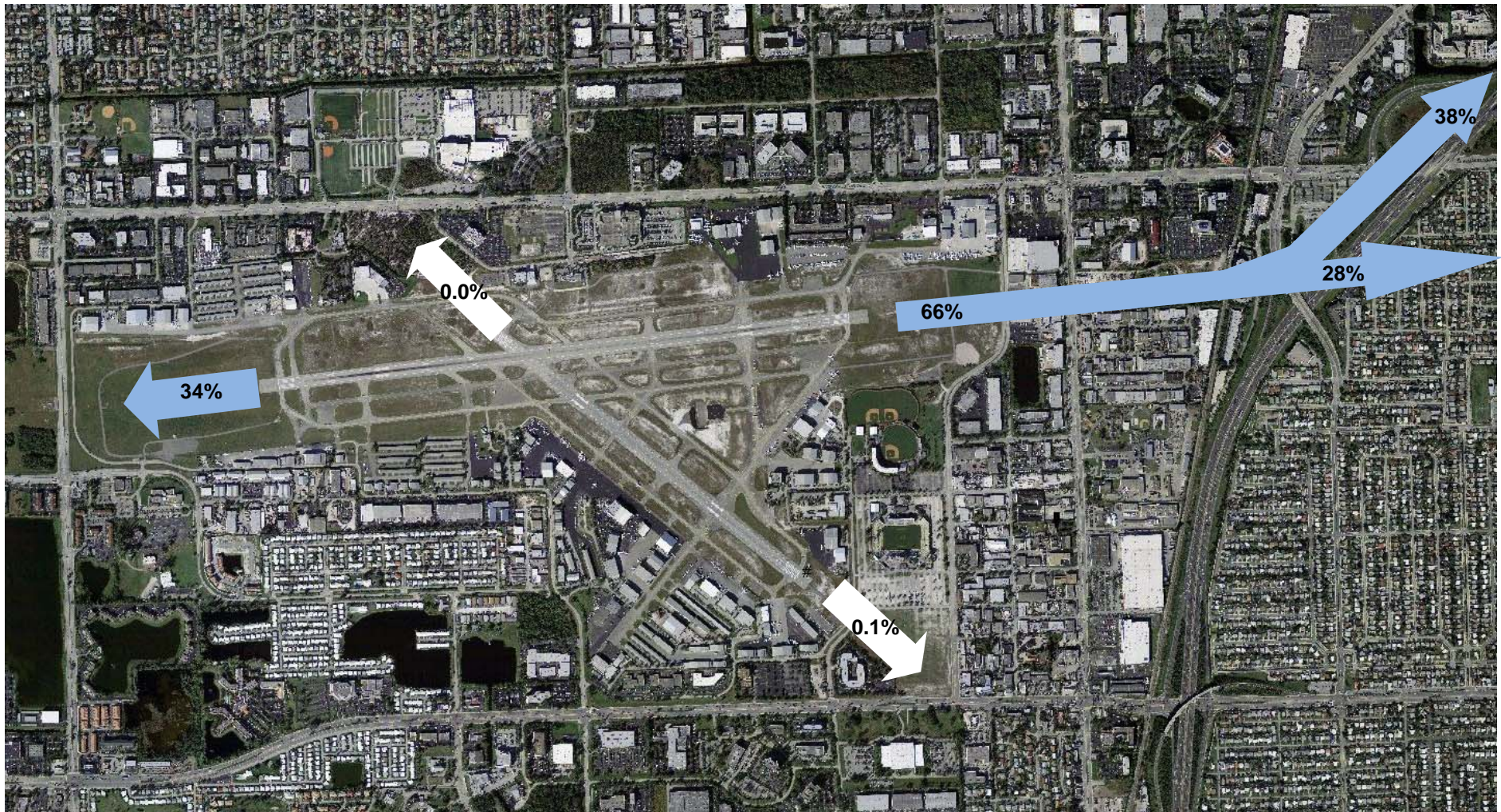


COOPERATIVE NOISE ABATEMENT EFFORT

Month of February

March 27, 2014

Percentage of Jet Departures Per Runway



As of November 2011 Noise Tables, the percentages for Runway 8 Jet Departures for the I-95 Turn and for Straight-out flights, have been changed. The old percentages for jets that made the I-95 Turn and for the jets that went straight-out were based on 100% of Runway 8 Jet Departures . The new percentages for jets that make the I-95 Turn and for jets that fly straightout will be based on 100% of all jet departures.

UPDATE ITEM B

DATE: March 21, 2014
TO: Aviation Advisory Board
FROM: Mark J. Cervasio, Acting Airport Manager
BY: Scott Kohut, Airport Operations Supervisor
SUBJECT: Airport Development and Construction



#P11242 U.S. Customs and Border Protection Facility

The Notice to Proceed (NTP) for the construction of the new 7,900 square foot United States Customs and Border Protection Facility was issued on February 12th. Work to date has consisted of the installation of construction and silt fencing, installation of temporary utilities, removal of abandoned fuel tanks, and demolition of the two existing hangars and office space on Parcel 18. An official ground breaking ceremony is scheduled for Tuesday, April 8th at the construction site. Project completion is anticipated in late spring 2015.

#11453 Taxiway Golf Relocation Project

The NTP for the Taxiway Golf Relocation Project was issued on January 28th. The project consists of relocating the portion of Taxiway Golf south of Taxiway Charlie 50 feet to the east to allow for adequate runway/taxiway separation when the new Customs facility is operational. The project also includes installation of energy efficient LED lighting. Work completed to date consists of installation of temporary and silt fencing, demolition of the existing taxiway pavement and lights, and clearing and grubbing of the new taxiway location. Project completion is anticipated in early August 2014.

#11743 Taxilane Charlie Rehabilitation and Replacement of Airfield Lighting

The NTP for the Taxilane Charlie Rehabilitation and Replacement of Airfield Lighting Project was issued on January 28th. The project consists of milling and resurfacing of Taxilane Charlie, reconstruction of the taxilane connectors, and replacing the existing quartz lighting with energy efficient LED lighting. Work to date has included the installation of the test strip and partial reconstruction of two connectors. Project completion is anticipated for mid July 2014.

February 2014

Alert I:

<u>Date</u>	<u>Aircraft Type</u>	<u>Problem</u>
2/15	Citation 550	Engine Vibration
2/20	Cessna 172	Rough Running Engine

Alert II:

<u>Date</u>	<u>Aircraft Type</u>	<u>Problem</u>
2/3	Piper 42	Unsafe Landing Gear
2/6	Cessna 210	Unsafe Landing Gear
2/24	Aero Commander	Unsafe Landing Gear
2/27	Cessna 340	Unsafe Landing Gear

Airport Operations:

Total Operations:	<u>Feb. '13</u> 12,297	<u>Feb. '14</u> 12,770
12-Month Cumulative:	<u>Mar. '12 – Feb. '13</u> 157,552	<u>Mar. '13 – Feb. '14</u> 157,464

Operations 10:00 p.m. to 7:00 a.m.: 585
Average Operations per night: 21

Customs Figures:

Total Aircraft Cleared:	<u>Feb. '13</u> 987	<u>Jan. '14</u> 963
12-Month Cumulative:	<u>Mar. '12 – Feb. '13</u> 12,311	<u>Feb. '13 – Jan. '14</u> 11,911
Total Passengers and Crew:	<u>Feb. '13</u> 3,562	<u>Feb. '14</u> 3,572
12-Month Cumulative:	<u>Feb. '12 – Jan. '13</u> 44,051	<u>Feb. '13 – Jan. '14</u> 43,826

Helistop Operations:

Total Operations:	<u>Feb. '13</u> 0*	<u>Feb. '14</u> 56
12-Month Cumulative:	<u>Mar. '12 – Feb. '13</u> 258*	<u>Mar. '13 - Feb. '14</u> 986*

*Data missing from Aug. '12 and Mar. '13

January 2014

Alert II:

<u>Date</u>	<u>Aircraft Type</u>	<u>Problem</u>
1/24	Lear 35	Smoke in Cabin

Airport Operations:

Total Operations:	<u>Jan. '13</u> 13,474	<u>Jan. '14</u> 12,913
12-Month Cumulative:	<u>Feb. '12 – Jan. '13</u> 158,222	<u>Feb. '13 – Jan. '14</u> 157,661

Operations 10:00 p.m. to 7:00 a.m.: 592
Average Operations per night: 19

Customs Figures:

Total Aircraft Cleared:	<u>Jan. '13</u> 1,166	<u>Jan. '14</u> 1,108
12-Month Cumulative:	<u>Feb. '12 – Jan. '13</u> 12,292	<u>Feb. '13 – Jan. '14</u> 11,935
Total Passengers and Crew:	<u>Jan. '13</u> 4,728	<u>Jan. '14</u> 4,230
12-Month Cumulative:	<u>Feb. '12 – Jan. '13</u> 44,012	<u>Feb. '13 – Jan. '14</u> 43,861

Helistop Operations:

Total Operations:	<u>Jan. '13</u> 0*	<u>Jan. '14</u> 62
12-Month Cumulative:	<u>Feb. '12 – Jan. '13</u> 308*	<u>Feb. '13 - Jan. '14</u> 930*

*Data missing from Aug. '12 and Mar. '13

UPDATE ITEM C

DATE: March 21, 2014
TO: Aviation Advisory Board
FROM: Mark J. Cervasio, Acting Airport Manager *MJC*
BY: Diana McDowell, Administrative Assistant II
SUBJECT: Arrearages

Rent

The arrearage to report for the month of February 2014 is as follows:

DHS Investments, LLC – Parcel 8G

Fuel Flowage

There are no arrearages to report.

Fllair

FLL AIRPORT IMPROVEMENTS & RENOVATIONS

1st Quarter 2014

Fort Lauderdale-Hollywood International Airport

South Runway Expansion

Many developments and milestones for Fort Lauderdale-Hollywood International Airport's (FLL) South Runway Expansion Project have been completed through the 1st quarter of 2014 including:



- Traffic on US 1 near FLL shifted west into the runway and taxiway structures. The runway structure is 810 feet long and the taxiway structure is 440 feet long. The average clearance is 24 feet in each structure. The shift is part of the reconfiguration of traffic for US 1 in conjunction with the South Runway Project.
- Crews began pouring the concrete base layer for the runway on the west end. Installation of underground utilities for runway lighting and FAA navigational equipment continue.
- Final preparations are being made to the new mid-field aircraft overnight parking area.
- Approximately 75 percent of the total embankment required for the runway is in place. Over 70 percent of the retaining wall is in place and has been installed up to 50 feet high.
- Approximately 90 percent of the Runway/Taxiway support beams have been installed and nearly 70 percent of the concrete deck has been poured.
- Construction of the airport exit interchange for US 1 north, I-595 west, and Port Everglades continues. The new southbound US 1 exit is also currently under construction.
- Dania Boat Sales and the Hilton Hotel parking garage were demolished. Demolition of the Hilton Hotel will begin in April 2014.

(Photo: View of the structures looking northwest)

Click on any image for a larger version.

Terminal 4 Redevelopment and Expansion

The Terminal 4 Redevelopment and Expansion Project broke ground in 2013. Work on the western expansion foundations continues. When complete, Terminal 4 will increase the number of gates for international and domestic travel.



Terminal 4 is being constructed in two phases (eastern and western) while

Quick Links

[FLLAIR](#)

[Updates](#)

[Gallery](#)

[Noise Mitigation](#)

[Airport Home](#)

For more information about the South Runway and terminal construction, go to [Airport Construction](#). The website has bimonthly construction updates, recent photos, and an animation of the future South Runway.

If you would like a FLL representative to speak at your next meeting, call 954-359-6978 or email asiegel@broward.org.

UPDATE ITEM E

maintaining operations.

Current Terminal 4 updates:

- Foundation work for the new Western Expansion concourse continues as new underground utilities and pile caps are installed.
- The Terminal 4 Aircraft Parking Apron Expansion Project construction commenced on December 16, 2013.
- Construction continues at Concourse H which includes new restroom facilities, installation of new carpet, charging stations, new lighting, and concession relocation.

(Photo: Columns under construction for the western phase of Terminal 4 with a plane taxiing in the background.)

US 1 Traffic Shift Into Structures

On January 10, 2014, north and southbound US 1 traffic shifted temporarily into one tunnel. US 1 North and the airport entrance will eventually shift to their own separate tunnels.

(Photo: Drivers view in the tunnel.)



Paving Begins on Runway

West side aerial view of the South Runway Project including final preparation for paving, drainage, marking, lighting, and signage.

(Photo: The runway and taxiway taking shape with the recent concrete paving.)



2200 SW 45th Street, Suite 101, Dania Beach, FL 33312, Telephone (954) 359-6100
Fort Lauderdale-Hollywood International Airport is a service of the
Broward County Board of County Commissioners.

Terms of Use

UPDATE ITEM F

DATE: March 21, 2014
TO: Aviation Advisory Board
FROM: Mark J. Cervasio, Acting Airport Manager *MJC*
BY: Florence Straugh, Noise Abatement Officer
SUBJECT: 2014 FXE Aviation Safety Expo

The Fort Lauderdale Executive Airport, hosted their fourth annual FXE Aviation Safety Expo on Saturday, March 15, 2014 from 9:00 a.m. to 4:00 p.m., at the Airport's Aviation Equipment & Service building located at 2020 Executive Airport Way, Fort Lauderdale, FL 33309 to promote aviation and runway safety to pilots. The safety event was conducted in partnership with the Federal Aviation Administration (FAA), Flight Standards District Office-19 (FSDO-19), the FAA Safety Team (FAASTeam) and the FAA Air Traffic Division with the target audience being South Florida's general aviation pilots, student pilots, and aircraft owners. The total number of attendees was 137.

Highlights from this one-day event included informational presentations, exhibitors, static aircraft display, and free prize drawings. The Civil Air Patrol Color Guard from Fort Lauderdale Composite Squadron opened the event and performed with precision. The Airport staff received additional support from the student volunteers and supervisors of the U.S. Customs and Border Protection Explorer Program who assisted with directing cars to designated parking areas.

Presentation Speakers for the three morning sessions:

- Mr. Jeff Page, Controller, FAA Air Traffic Control Tower (ATCT) at Fort Lauderdale Executive Airport (FXE), Mr. Dennis Dodge, Front Line Manager, FAA Terminal Radar Approach Control (TRACON), ATCT at Miami International Airport (MIA)
- Jim Parker, Caribbean Flying Adventures.Com
- Supervisor Richard Harris, U.S. Customs & Border Protection, Procedures and Process Tips and a K-9 search demonstrations

Presentation Speakers for the three afternoon sessions:

- Two sessions conducted by FAA Safety Team (FAASTeam) / FAA Flight Standards District Office-19 (FSDO): Mr. Luca Bencini-Tiboi, FAASTeam Representative and Mr. Mike Vitti, Miami TRACON

Exhibitors:

- Banyan Air Service and Pilot Shop
- Broward College, Aviation Program
- Embry Riddle Aeronautical University
- Everglades University
- Federal Aviation Administration – FSDO / FAASTeam
- Sano Jet Center
- South Florida Business Aviation Association (SFBA)
- U.S. Customs and Border Protection
- Vital Flight

Static Aircraft Displays:

- Cessna C-172 (Premier Aircraft Sales)
- Diamond DA-42 (Premier Aircraft Sales)
- Quest Kodiak (Banyan Air Service)
- L-39 (Jet Fighters International)

The afternoon sessions were conducted by the FAA Safety Team (FAASTeam) and eligible for Wings Credits for pilots who participate in the FAA Pilot Proficiency Program (also known as the Wings Program).

The Airport promoted the event through emails and various websites and online calendars as well as posters and flyers to reach out to area pilots.

The Airport staff was delighted that Mayor Seiler was able to be there to welcome the attendees to this important Airport safety event. We also want to thank Mr. Ron Carlson, Board member, for attending in support of our efforts.