



LAS OLAS BOULEVARD CORRIDOR IMPROVEMENT PROJECT

NEW POSSIBILITIES IN OUR BACKYARD

EDSA



KIMLEY - HORN

[streetscape improvement projects]



ALMOND AVE.



SEBASTIAN PARK



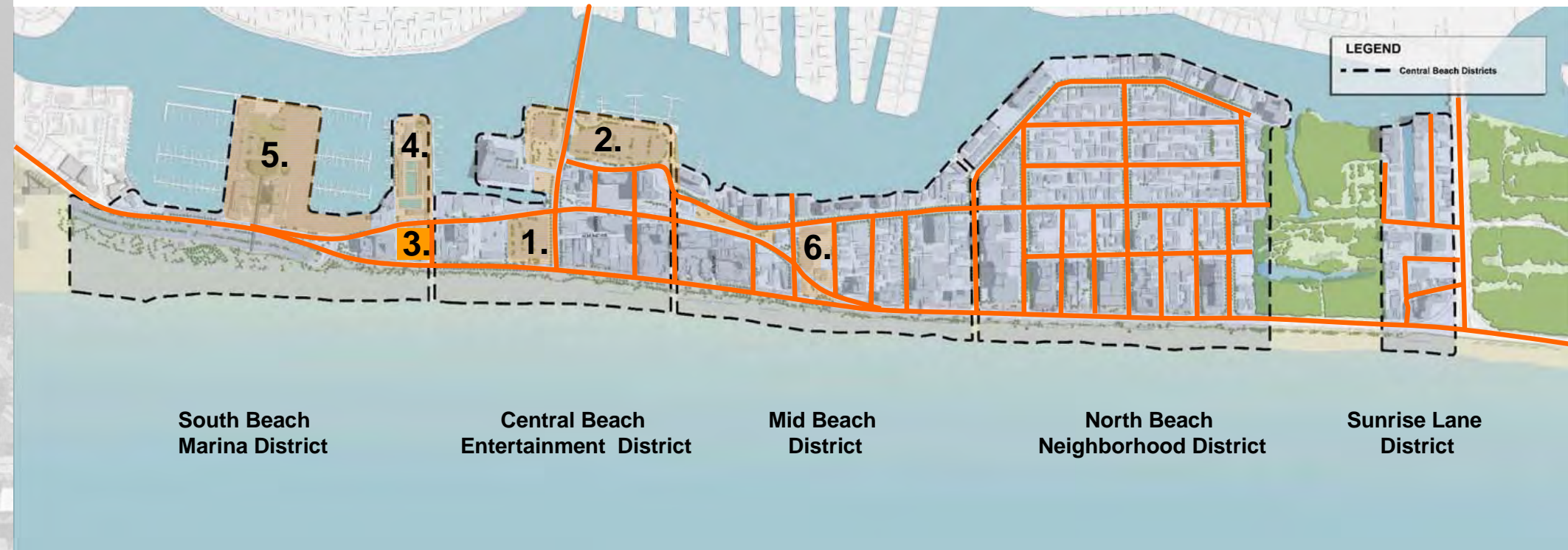
SR AIA STREETScape



[sasaki master plan]

Central Beach Public Realm Opportunities

1. Oceanside Plaza
2. Las Olas / Birch Street Parking Lots
3. D.C. Alexander Park
4. Swimming Hall of Fame
5. Bahia Mar
6. Alhambra / Sebastian Parking Lot
7. Streetscapes



City of Fort Lauderdale
Planning & Zoning Department

Central Beach Master Plan
Las Olas Gateway Plan

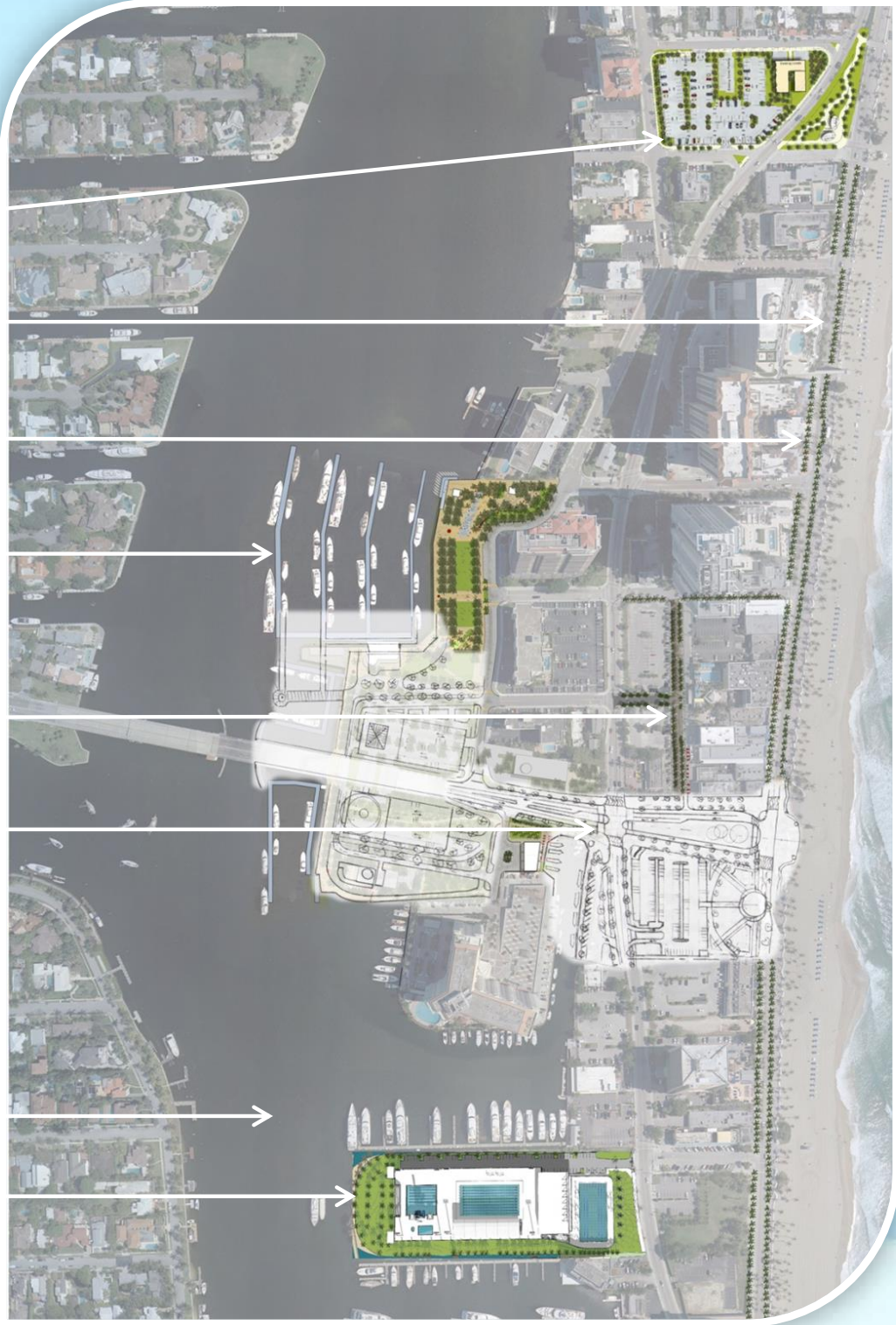
SASAKI



[joint city commission & BRAB meeting]

Overall Project Development Plan

- Sebastian Lot
- SR A1A Beachfront Promenade (East Side)
- SR A1A Streetscape (West Side)
- Intracoastal Promenade / Marina Expansion
- Almond Avenue
- Las Olas Blvd Improvements
 - Las Olas Plaza
 - Oceanside Park
 - Channel Square
 - Parking Garages
- Marina Access Dredging
- Aquatics Complex





" AT ITS BEST URBAN DESIGN IMPROVES QUALITY OF LIFE FOR ALL MEMBERS OF THE COMMUNITY. THIS OBJECTIVE IS AT THE HEART OF EVERY URBAN DESIGN AND PLANNING PROJECT WE DO."

— PAUL D. KISSINGER, EDSA PRINCIPAL



[sense of place]

THE WATERFRONT BECOMES THE FRONT DOOR OF THE COMMUNITY;
A PLACE THAT ATTRACTS PEOPLE TO VISIT, EXPERIENCE AND EXPLORE.

- PLACES THAT PERFORM
- PLACES THAT TRANSFORM
- PLACES THAT INSPIRE

[impact lives]

SUCCESSFUL URBAN SPACES BECOME DESTINATIONS FEATURING
AN ABUNDANCE OF FOOT TRAFFIC, PROGRAMMED ACTIVITIES,
ACTIVE AND PASSIVE USES, CIVIC FEATURES, PUBLIC ART AND A
MIX OF DEVELOPMENT TYPES ALONG THEIR EDGES.

- SERVE PEOPLE
- SERVE COMMUNITY
- SERVE ENVIRONMENT



[lead designer]



CITY OF FORT LAUDERDALE
PROCUREMENT SERVICES
DEPARTMENT

CONSTRUCTION
MANAGER-AT-RISK

SUB-CONTRACTORS

EDSA

TEAM LEADER
PLANNING
LANDSCAPE ARCHITECTURE
URBAN DESIGN

DOUGLAS COOLMAN, PLA, FASLA
Specialty Consultant

ARQUITECTONICA
Architects

WALKER PARKING CONSULTANTS
Parking Garage Design

KIMLEY-HORN AND ASSOCIATES, INC
Civil Engineering

TINTER TRAFFIC
Traffic Planning

DICKEY CONSULTANT SERVICES (MBE)
Consensus Building

COASTAL SYSTEMS INTERNATIONAL, INC.
Environmental/Coastal Engineering + Permitting

AQUATIC DESIGN & ENGINEERING
Water Feature Design

LANGAN ENGINEERING
Geotechnical Engineering

AVIROM AND ASSOCIATES
Surveying

CMS, INC. (MBE)
Cost Estimating

EXP. INC.
Electrical Engineering/Lighting





Kimley-Horn
and Associates, Inc.

CIVIL ENGINEERING

AUTHORS OF:

**"BROWARD COMPLETE STREETS
GUIDELINES"**

**"DESIGNING WALKABLE URBAN
THOROUGHFARES (ITE & CNU)"**

FDOT / CITY / COASTAL EXPERIENCE



[process]

PHASE ONE

STAGE 1
RECONNAISSANCE / UNDERSTANDING / OUTREACH

- Project Mobilization & Kickoff Meeting
- Review Existing Data
- Collect Additional Data
- Site Opportunities & Constraints
- Best Practices / Research / Presentation
- Project Programming
- Develop Consensus Building Program
- Progress Meetings with Staff / CRA / Beach Redevelopment Advisory Board / City Commission

CONSENSUS BUILDING

- Develop Program
- Initial Outreach Meeting
- Establish Webpage / Social Media

PROJECT MANAGEMENT

- PROGRESS MEETINGS
- FINANCIAL OVERVIEW / REPORTS
- UPDATES TO STAFF AND THE CITY COMMISSION

STAGE 2
CONCEPTUAL DESIGN / CONSENSUS BUILDING / PROGRAMMING

- Develop Conceptual Plans
- Develop Preliminary Budget
- Develop Photo-Realistic Renderings
- Preliminary Permit Outreach Meetings
- Public Outreach Consensus Building
- Progress Meetings with Staff / CRA / Beach Redevelopment Advisory Board / City Commission
- Refine Concept Plans & Renderings
- Coordination with City CMRC

CONSENSUS BUILDING

- Focus Group
- Public Meetings
- Stakeholder Meetings
- Webpage / Social Media / Newsletter

PROJECT MANAGEMENT

PHASE TWO

STAGE 3
DETAILED DESIGN / DEVELOP GUARANTEED MAXIMUM PRICE

- Detailed Design
 - » Schematic
 - » Construction Documents 30%, 60%, 90%, 100%
- Develop Budgets
- Coordination with CMRC to Develop GMP & Construction Phasing
- Ongoing Permitting / Coordination
- Public Outreach
- Progress Meetings with Staff / CRA / Beach Redevelopment Advisory Board / City Commission

CONSENSUS BUILDING

- Focus Group
- Public Meetings
- Stakeholder Meetings
- Webpage / Social Media / Newsletter

PROJECT MANAGEMENT

- MANAGE PROJECT DOCUMENTATION DATABASE
- COORDINATION WITH CITY CONSULTANTS
- MANAGE PROJECT SCHEDULE
- COORDINATE WITH CMRC

STAGE 4
PERMITTING

- Permitting for Project
 - » ACOE
 - » FDOT
 - » FL DEP
 - » FL Fish & Wildlife
 - » Broward County
 - » City of Ft. Lauderdale
 - DRC
 - Building Permits
- Progress Meetings with Staff / CRA / Beach Redevelopment Advisory Board / City Commission

CONSENSUS BUILDING

- Focus Group
- Public Meetings
- Stakeholder Meetings
- Webpage / Social Media / Newsletter

PROJECT MANAGEMENT

STAGE 5
CONSTRUCTION RELATED SERVICES

- In-house Construction Related Services
 - » Maintain Records, Logs, Reporting
- On-site Construction Related Services
 - » Threshold Inspection
 - » Site Visits
- Progress Meetings with Staff / CRA / Beach Redevelopment Advisory Board / City Commission

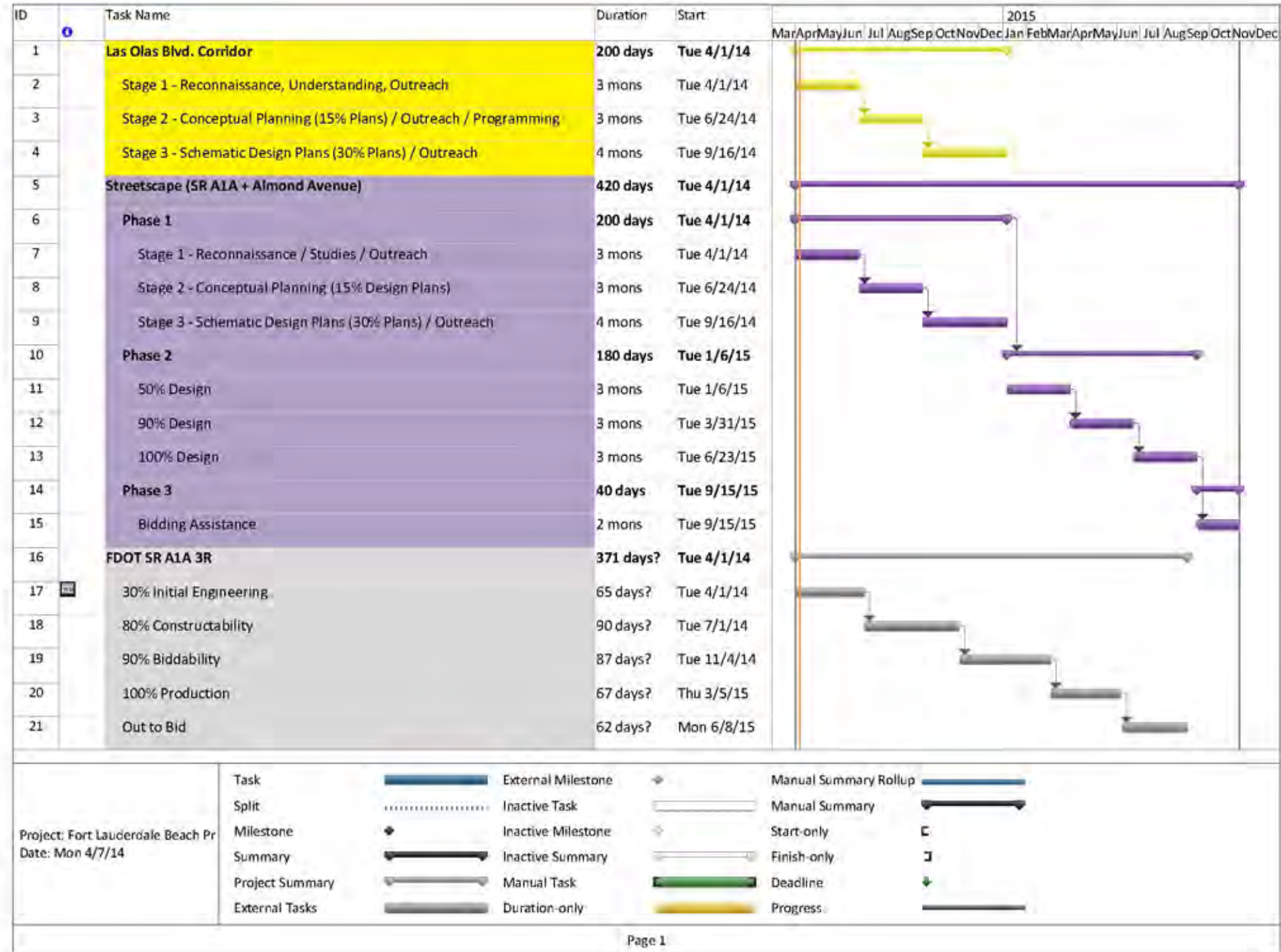
CONSENSUS BUILDING

- Ongoing Updates
- Webpage / Social Media Outreach

PROJECT MANAGEMENT



[schedule]



[stakeholder+public involvement] management



TEAM STRENGTHS

DAILY INTERPLAY FOR THE LIFE OF THE PROJECT |
BEING PHYSICALLY PRESENT

PROCESS

LISTEN TO ALL FACETS OF THE COMMUNITY | GENERATE
IDEAS | ADDRESS CONCERNS | GET THE FACTS OUT

LOGISTICS

COMMUNITY WORKSHOP AND DESIGN | CHARRETTE
| PUBLIC INFORMATION MEETINGS BREAKOUT GROUPS
AND WORKS SESSIONS | SCORECARDS & RATING
SYSTEMS

[observations+vision]

PROPOSED PUBLIC DAY USE DOCK - PROVIDE ACCESS FROM INTRACOASTAL TO PROMENADE AND BEACH
COORDINATE WITH CITY PLANNING CONSULTANT FOR POTENTIAL MARINA

OPPORTUNITY TO CREATE AN INTRACOASTAL PROMENADE CONNECTING LAS OLAS AND BEACH FRONT MAKING PEDESTRIANS THE PRIORITY WITH INTERACTION BETWEEN THE WATERFRONTS

PROPOSED YACHTING CENTER AND MARINA FRONT PARK

POTENTIAL TO CREATE AN ICONIC ELEMENT VISIBLE BY VEHICULAR AND PEDESTRIAN TRAFFIC COMING WEST ALONG LAS OLAS BOULEVARD

E. LAS OLAS BLVD.

COORDINATE WITH LAS OLAS BRIDGE REFURBISHMENT

PROPOSED ICONIC PARKING GARAGE TO BE "GREEN PARKING GARAGE DESIGN" SCREENED WITH VEGETATION ALONG LAS OLAS BOULEVARD BRIDGE. PARKING TO BE ZERO NET LOSS. STRONG PEDESTRIAN CORRIDOR PROVIDED ALONG LAS OLAS FROM PARKING GARAGE AND INTRACOASTAL TO BEACH FRONT MAKING PEDESTRIANS THE PRIORITY

PROPOSED RESTAURANT ALONG INTRACOASTAL PROMENADE

DERELICT GREEN SPACE - OPPORTUNITY TO CREATE A LANDSCAPE STATEMENT AND PEDESTRIAN AREA

CHANNEL SQUARE - OPPORTUNITY TO CREATE PARK/PUBLIC SPACE FOR DAILY USE OR SPECIAL EVENTS. TO PROVIDE CONNECTION POINT FOR WATER TAXI DOCK AND CONNECTION TO PEDESTRIAN PROMENADE ALONG INTRACOASTAL

PROVIDE CLEAR VISTA OF ATLANTIC OCEAN AND BEACH FRONT WITH PROPOSED ICONIC PLAZA. FOCUS VIEWS TO BEACH THROUGH EXAMINATION OF RE-ALIGNMENT OF LAS OLAS BOULEVARD.

CORTEZ ST.

POINSETTIA ST.

ALMOND AVE.

ALMOND AVE.

ALMOND AVE.

ALMOND AVE.

ALMOND AVE.

ALMOND AVE.

ALMOND AVE.

ALMOND AVE.

ALMOND AVE.

ALMOND AVE.

ALMOND AVE.

ALMOND AVE.

ALMOND AVE.

ALMOND AVE.

ALMOND AVE.

ALMOND AVE.

ALMOND AVE.

ALMOND AVE.

ALMOND AVE.

ALMOND AVE.

ALMOND AVE.

ALMOND AVE.

ALMOND AVE.

ALMOND AVE.

ALMOND AVE.

ALMOND AVE.

ALMOND AVE.

ALMOND AVE.

ALMOND AVE.

ALMOND AVE.

ALMOND AVE.

ALMOND AVE.

ALMOND AVE.

ALMOND AVE.

ALMOND AVE.

COORDINATE PLANNING AND DESIGN WITH ALMOND AVENUE IMPROVEMENTS

POTENTIAL TO CREATE AN ICONIC ELEMENT VISIBLE BY VEHICULAR AND PEDESTRIAN TRAFFIC FROM NORTH ON SR A1A

EXISTING PARK WITH GOOD VEGETATION PROVIDES OPPORTUNITY TO CREATE PARK/PUBLIC SPACE FOR DAILY USE OR SPECIAL EVENTS

CREATE A MEMORABLE AND ICONIC BEACH EXPERIENCE/ RE-ESTABLISH AND ENHANCE THE BRANDING OF THE BEACH AND STREETScape THROUGH SITE ELEMENTS, LANDSCAPE, HARDSCAPE AND LIGHTING

REBUILD OCEAN FRONT PLAZA TO CREATE A SYMBOLIC CENTER/ GATHERING SPACE AT THE END OF LAS OLAS BOULEVARD ALONG SR A1A THROUGH A CENTRAL BEACH EXPERIENCE

OCEAN PARK PLAZA TO CREATE A CENTRAL MEMORABLE BEACH EXPERIENCE AND GATHERING PLACE FOR SPECIAL EVENTS AND PERFORMANCES

CONFIGURE REMAINING PARKING TO SUPPORT EVENTS

POTENTIAL TO CREATE AN ICONIC ELEMENT VISIBLE BY VEHICULAR AND PEDESTRIAN TRAFFIC SOUTH ON SR A1A



[ocean vista]



[discover]



LOOK AT SOMEPLACE WE KNOW
THROUGH FRESH EYES

VISION FOR THE FUTURE

ELEMENTS CONTRIBUTE TO A COHESIVE
DISTRICT SIGNATURE

CREATE ICONIC GATEWAY TO OUR
MOST IMPORTANT NATURAL RESOURCE

NEW OPPORTUNITIES TO INCORPORATE
PUBLIC ART

CATALYTIC OPEN SPACES



[re-imagine]



VIEW THE PROJECT AS AN ICONIC DESTINATION
NOT INDIVIDUAL PARTS

RE-INTERPRET THE CURRENT AESTHETIC - TAKE IT
FURTHER WITH NEW ELEMENTS

PARKING GARAGE MOBILITY AND HIGH VISUAL
ASSETS

RECREATE THE PROJECT AREA AS THE TRUE
HEART OF THE DISTRICT

CLEAR VISTAS TO THE ATLANTIC OCEAN

ACTIVE PROGRAMMING

[capitalize]



FORT LAUDERDALE HAS A SIGNIFICANT BRAND
HARMONIZE AND ENHANCE THE BRAND POWER
LEVERAGE EXISTING ASSETS AND EXPAND
THROUGHOUT THE BEACH DISTRICT

CURRENT + FUTURE TECHNOLOGIES +
SENSIBILITIES

SITES FOR COMMERCIAL EXPANSION

ENERGY, ENVIRONMENT, ECONOMY, EQUITY -
SOLUTIONS

[connect]



THE SUCCESS OF ANY SPACE IS DEPENDENT UPON MANY LAYERS OF CONNECTIONS INTEGRATED WITH CONTEXT AND SURROUNDINGS

PHYSICAL CONNECTIONS: TRANSPORTATION - CAR, BUS, TROLLEY, WATER TAXI, WALK, BOAT

CIVIC PRIDE ***"THAT IS MY BEACH, MY CITY"***

PROMOTE THE NEW BEACH

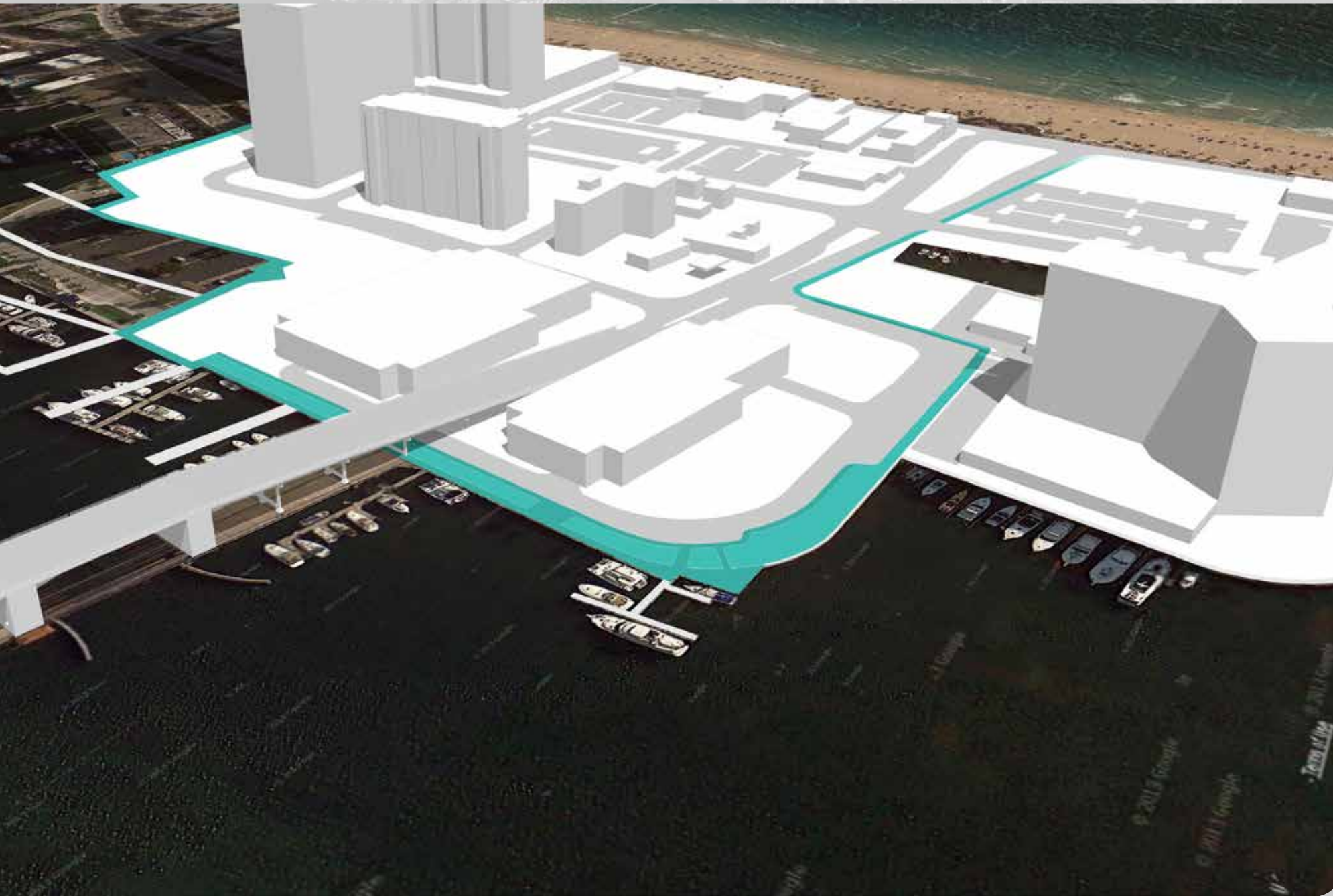
FLEXIBLE DESIGN FOR PARTICIPATION IN PROGRAMMED EVENTS



[specific observations/concepts] oceanfront park



[specific observations/concepts] waterside intracoastal promenade



[specific observations/concepts] architecture vernacular



KIMLEY - HORN

[streetscape improvement projects]



ALMOND AVE.



SEBASTIAN PARK



SR AIA STREETScape



ALMOND AVENUE

[street treatment]

- ONE WAY TRAFFIC
- ABILITY TO CLOSE STREET OFF
- ACCOMMODATE DELIVERY TO BUSINESSES
- FEATURES FOR DAY AND NIGHT ACTIVITIES

- PEDESTRIAN FRIENDLY
- PLACE FOR SPECIAL EVENTS



[surface treatment]

- WIDER SIDEWALKS
- SHADE TREES
- DECORATIVE LED STREET LIGHTS
- BOLLARDS AT INTERSECTIONS/CORNERS



SR A1A STREETSCAPE

[pedestrian circulation]

- IMPROVE PEDESTRIAN FLOW
- CONSOLIDATE TREES AND LIGHTS NEAR CURB
- SEPARATE THE PEDESTRIAN AND CAFE ZONES

[vehicular & bike circulation]

- REDUCE LANE WIDTHS TO 10'
- INCORPORATE BIKE LANES
 - REQUEST FULL COLOR BIKE LANE FROM FDOT

[signage]

- PEDESTRIAN CROSSINGS
- INCREASE VISIBILITY
- RAPID FLASHING BEACONS (RFB)
- WAYFINDING SIGNAGE



SEBASTIAN PARK

[improve]

- REDEVELOPING THE MEDIAN TO PROVIDE A NEW RESTROOM BUILDING
- RECONFIGURING THE SEBASTION STREET AND SR A1A INTERSECTION



